

2255 *Cumberland Pkwy SE*

Building 900 | Atlanta, GA 30339

For Sale or Lease:

5,706 SF Office Condo Available

Property Details:

- \$12.50 per sf modified gross lease rate
- 5,706 SF on 3 Levels (Main, Upper, and Lower Level); approx. 1,902 SF on each level
- Excellent Smyrna/Vinings location off Paces Ferry Rd/I-285
- Convenient to I-285, I-75, airport, and first-class retail
- Large offices on glass plus oversized executive office on main level
- break room & private restroom located on each level
- conference room, kitchen/break room, restroom w/shower, and storage located on lower level
- Use what you need and lease out the rest or occupy the entire building

Exclusive Agents:

Drew Griffin

dgriffin@richardbowers.com

Grahame Wood

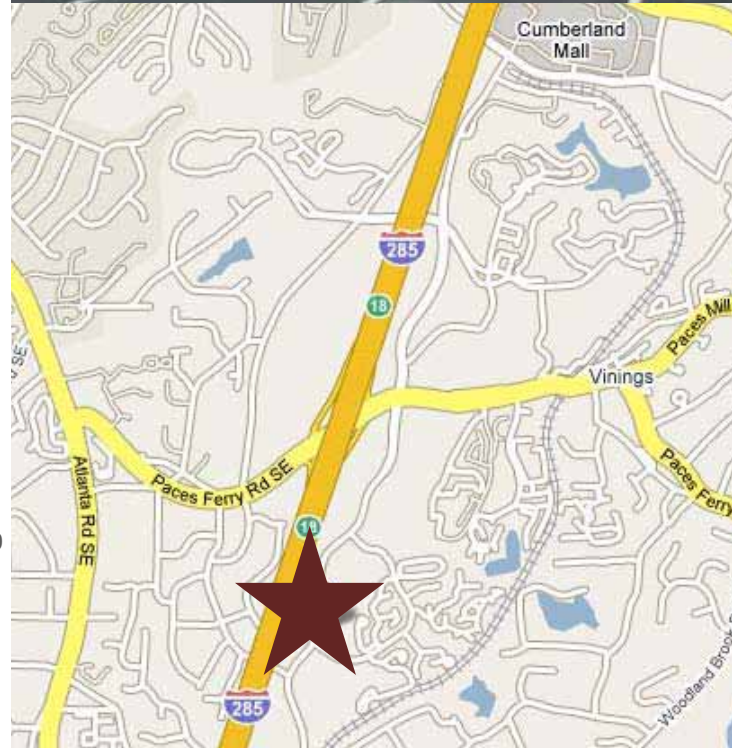
g.wood@richardbowers.com

404.816.1600

Richard Bowers & Co.

260 Peachtree St, Suite 2400

Atlanta, GA 30303



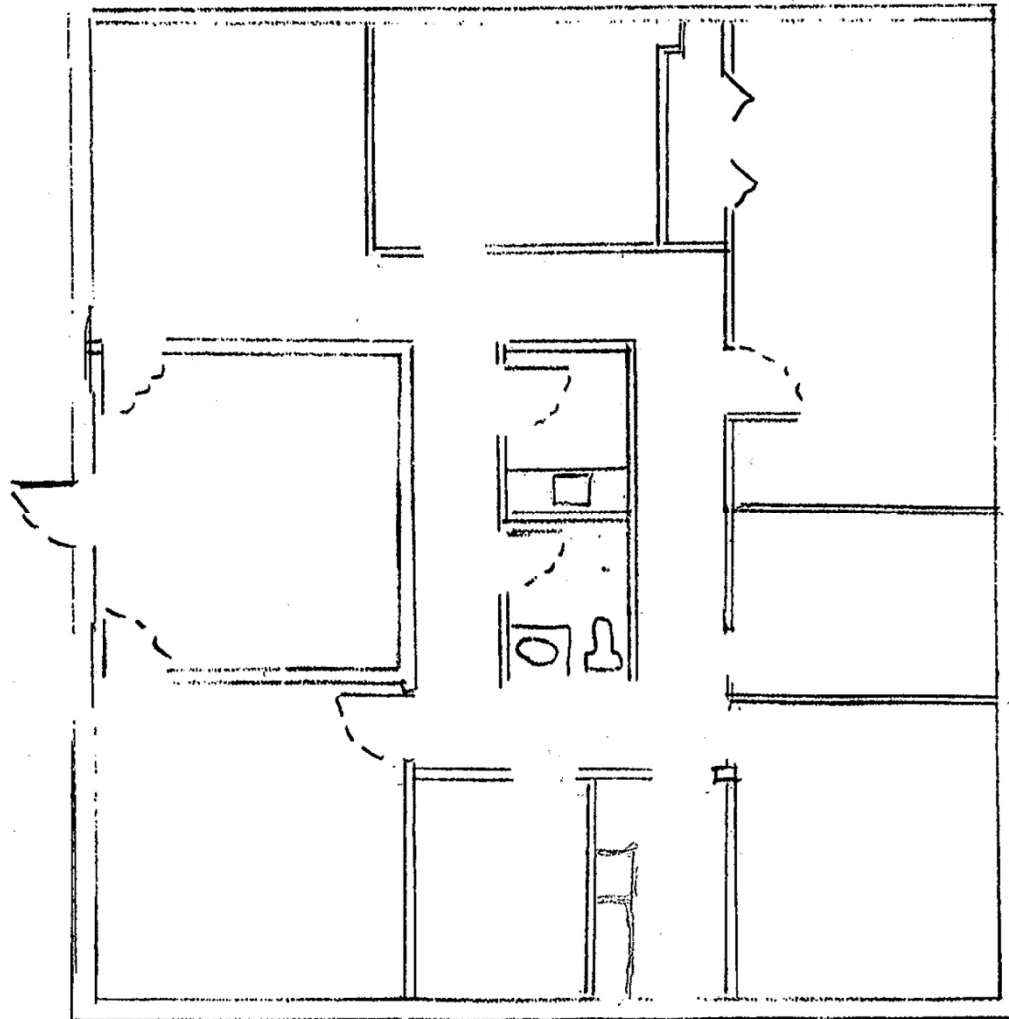
Visit www.richardbowers.com | Call us at 404.816.1600

The information contained herein has been received from sources deemed reliable but no liability is assumed by Richard Bowers & Co. or its agents for errors or omissions.

2255 *Cumberland Pkwy SE*

Building 900 | Atlanta, GA 30339

MAIN LEVEL



**5,706 SF on 3 Levels—Main, Upper, & Lower*

***Approximately 1,902 SF on each level*

Exclusive Agents:

Drew Griffin

dgriffin@richardbowers.com

Grahame Wood

g.wood@richardbowers.com

404.816.1600

Richard Bowers & Co.

260 Peachtree St, Suite 2400

Atlanta, GA 30303



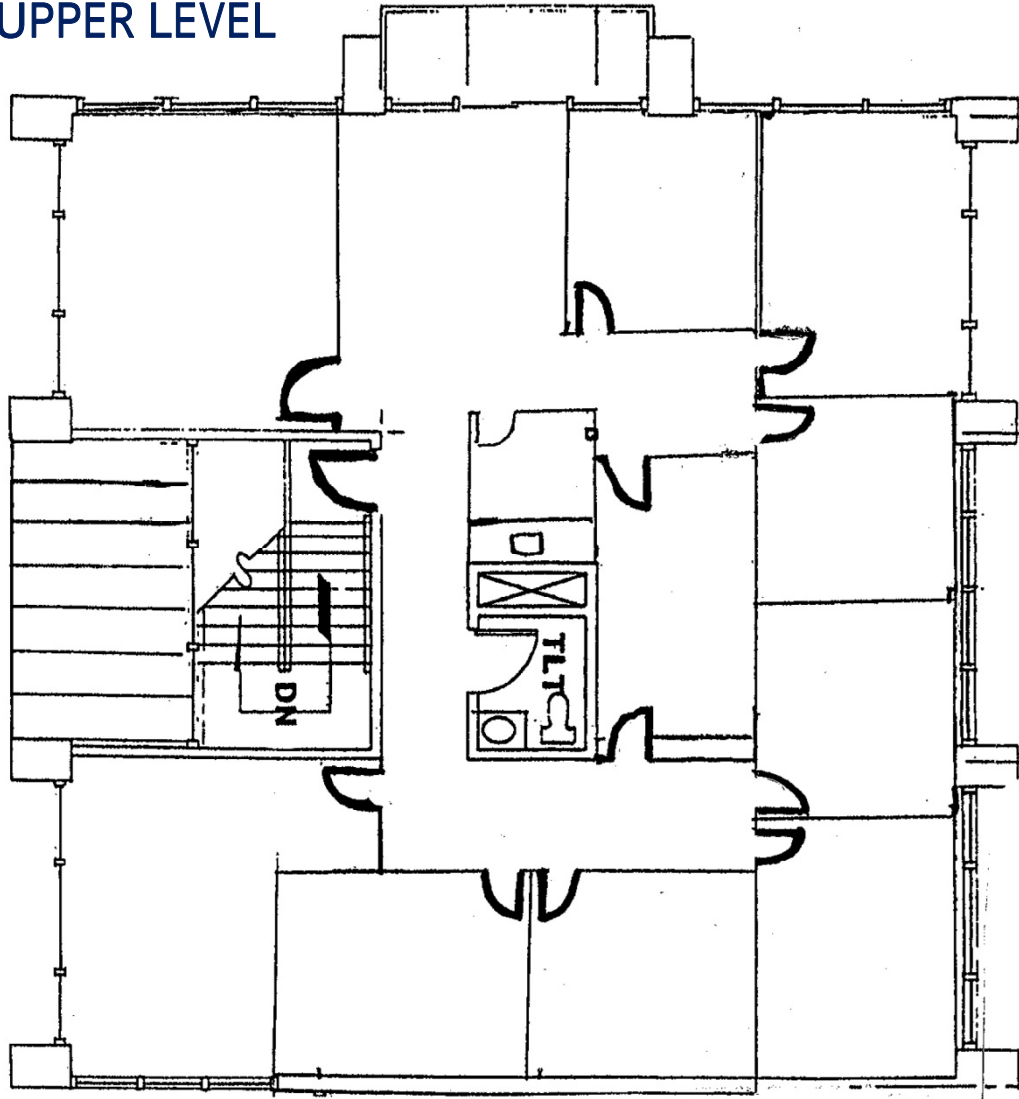
Visit www.richardbowers.com | Call us at 404.816.1600

The information contained herein has been received from sources deemed reliable but no liability is assumed by Richard Bowers & Co. or its agents for errors or omissions.

2255 *Cumberland Pkwy SE*

Building 900 | Atlanta, GA 30339

UPPER LEVEL



**5,706 SF on 3 Levels—Main, Upper, & Lower*

***Approximately 1,902 SF on each level*

Exclusive Agents:

Drew Griffin

dgriffin@richardbowers.com

Grahame Wood

g.wood@richardbowers.com

404.816.1600

Richard Bowers & Co.

260 Peachtree St, Suite 2400

Atlanta, GA 30303



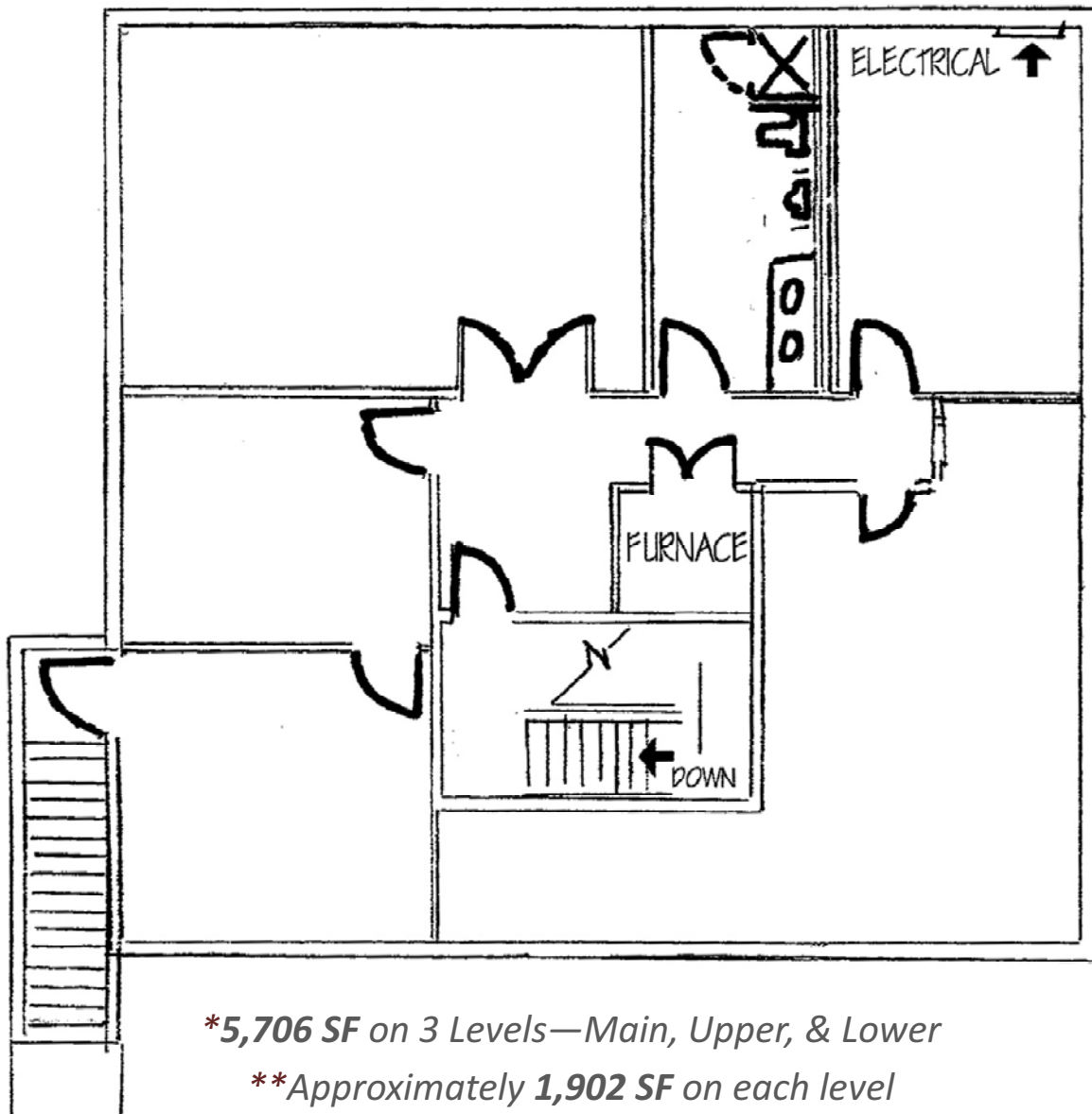
Visit www.richardbowers.com | Call us at 404.816.1600

The information contained herein has been received from sources deemed reliable but no liability is assumed by Richard Bowers & Co. or its agents for errors or omissions.

2255 *Cumberland Pkwy SE*

Building 900 | Atlanta, GA 30339

LOWER LEVEL



**5,706 SF on 3 Levels—Main, Upper, & Lower*

***Approximately 1,902 SF on each level*

Exclusive Agents:

Drew Griffin

dgriffin@richardbowers.com

Grahame Wood

g.wood@richardbowers.com

404.816.1600

Richard Bowers & Co.

260 Peachtree St, Suite 2400

Atlanta, GA 30303



Visit www.richardbowers.com | Call us at 404.816.1600

The information contained herein has been received from sources deemed reliable but no liability is assumed by Richard Bowers & Co. or its agents for errors or omissions.