

6230 Shiloh Road

Meadows Pavilion
Alpharetta, GA 30005

FOR SALE
31,000SF
Office
Building

Property Details:

- Located in the Meadows at Bluegrass Development
- Great owner occupied opportunity
- Two story brick and steel frame
 - Completed in 1997
- Approximately 31,000 total square feet
- One elevator
- Excellent surface parking:
 - Approximately 4/1000 ratio
- Currently multi-tenant configuration
- Approx 2.75 acre site
- Low Forsyth County property taxes
- High quality interior finishes

Exclusive Agent:

T. Randall Hoye

404.295.0908

rhoye@richardbowers.com

Richard Shaw

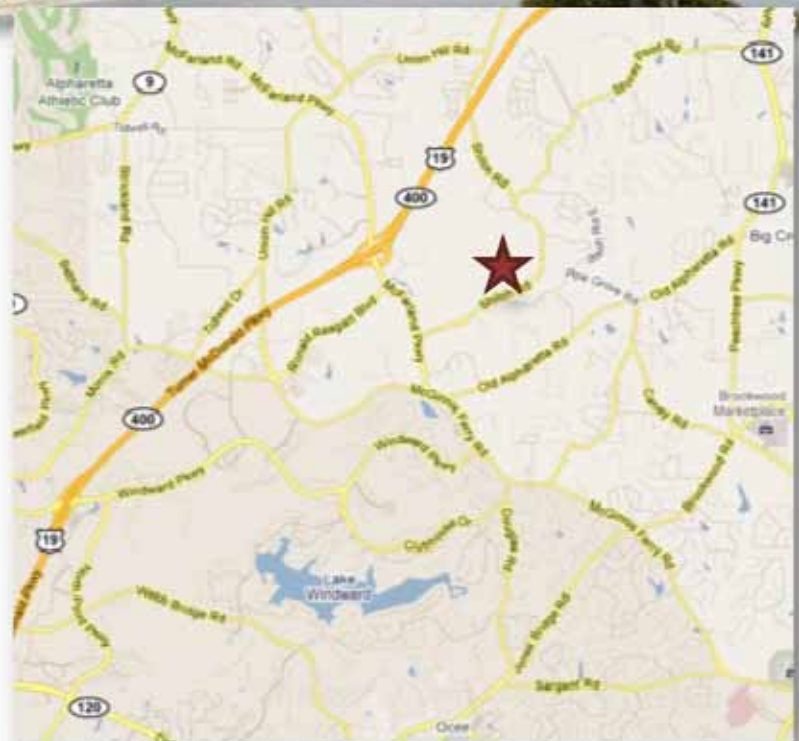
rshaw@rbmanagement.com

404.816.1600

Richard Bowers & Co.

260 Peachtree St, Suite 2400

Atlanta, GA 30303



Visit www.richardbowers.com | Call us at 404.816.1600

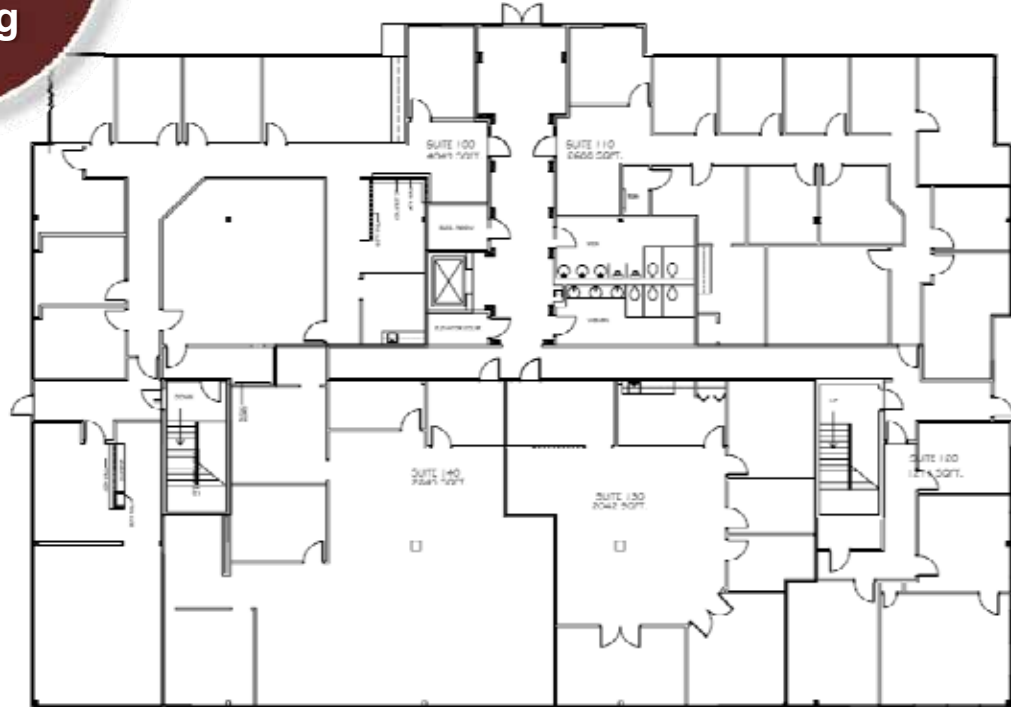
The information contained herein has been received from sources deemed reliable but no liability is assumed by Richard Bowers & Co. or its agents for errors or omissions.

6230 Shiloh Road

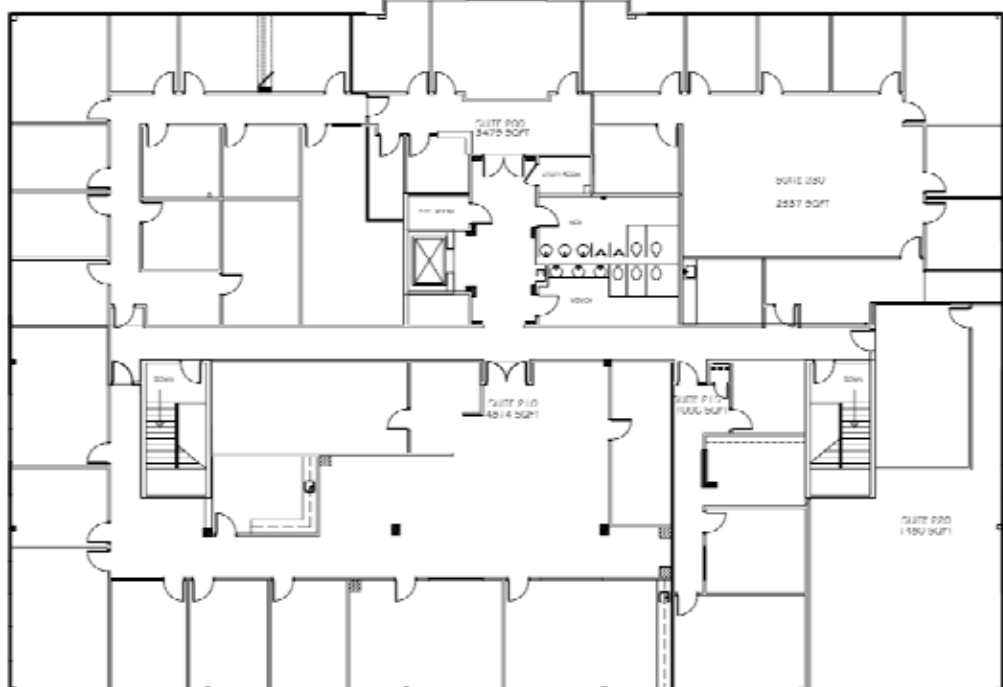
Meadows Pavilion
Alpharetta, GA 30005

FOR SALE
31,000SF
Office
Building

First Floor:



Second Floor:



Visit www.richardbowers.com | Call us at 404.816.1600

The information contained herein has been received from sources deemed reliable but no liability is assumed by Richard Bowers & Co. or its agents for errors or omissions.