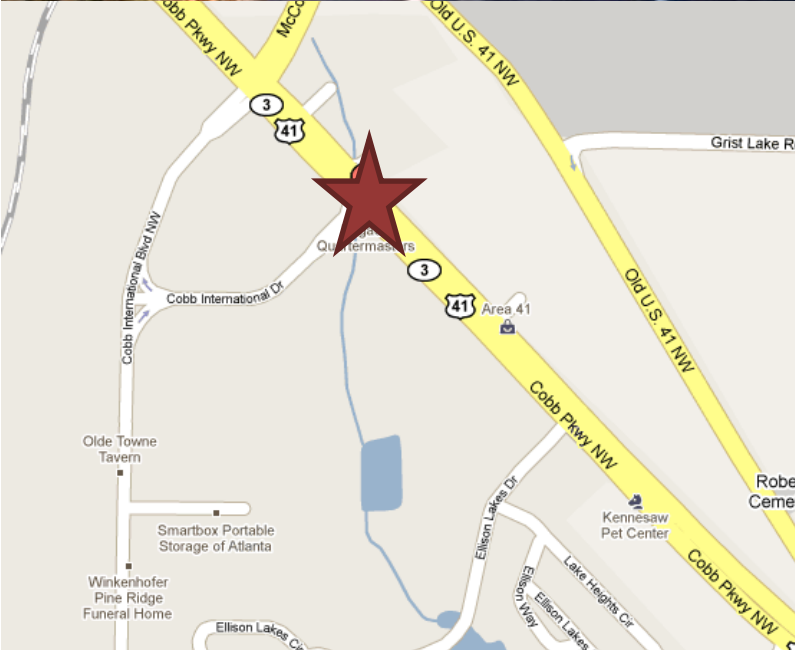


FOR LEASE
6,000-50,00SF
Office
Warehouse

1025 Cobb International Dr.

KENNESAW BUSINESS CENTER
Kennesaw, GA 30152



Property Details:

- Approx 6,000 SF Bays
- 2 Dock High Doors Per Bay
- 20' Minimum Clear Height
- Locally Owned & Managed
- Sprinklered
- Generous Parking
- Zoned Heavy Industrial

Building 100:

- Approx. 51, 168 SF Total Divisible
- Approx. 6,396 SF Per Bay
- 2 Dock Doors Per Bay
- 20' Min Clear Height

Building 200:

- Approx. 56, 000 SF Total Divisible
- Approx. 6,000 SF Per Bay
- 2 Dock Doors Per Bay
- 20' Min Clear Height

Exclusive Agent:

Randy Hoye

rhoye@richardbowers.com

404.816.1600

Richard Bowers & Co.

260 Peachtree St, Suite 2400

Atlanta, GA 30303



Visit www.richardbowers.com | Call us at 404.816.1600

The information contained herein has been received from sources deemed reliable but no liability is assumed by Richard Bowers & Co. or its agents for errors or omissions.

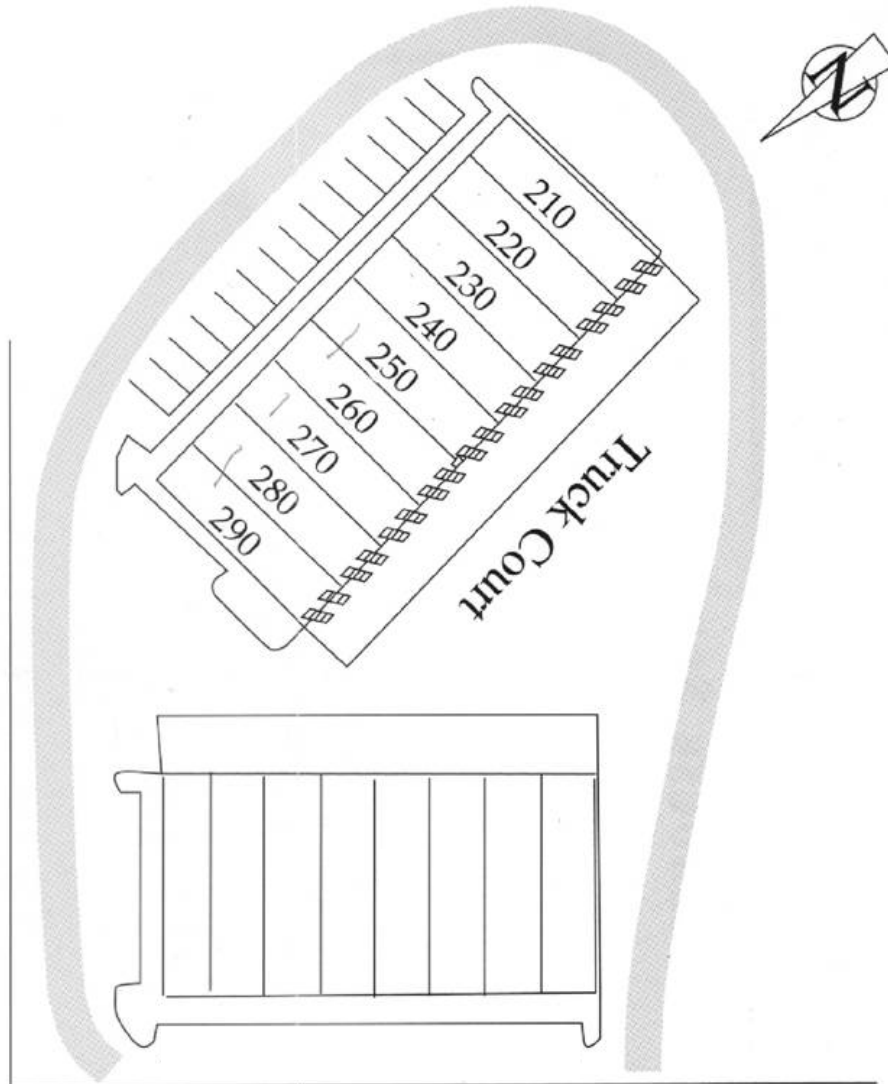
FOR LEASE
6,000-50,00SF
Office
Warehouse

1025 Cobb International Dr.

KENNESAW BUSINESS CENTER

Kennesaw, GA 30152

U.S. HIGHWAY 41



COBB INTERNATIONAL DR.



Visit www.richardbowers.com | Call us at 404.816.1600

The information contained herein has been received from sources deemed reliable but no liability is assumed by Richard Bowers & Co. or its agents for errors or omissions.