

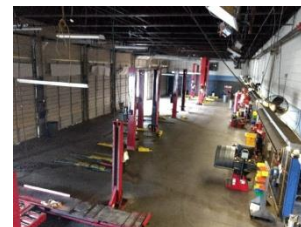
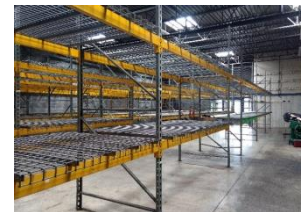
125 Park Access Drive

Lawrenceville, GA 30046

11,660 SF

FOR SALE

Retail Service/
Industrial



Property Highlights

- Price - \$1,100,000 or \$94.34 PSF
- Building size 11,660 SF
- Lot size 60,984 SF or 1.40 Acres
- 10 bays with garage doors 18' ceilings
- Building has a lobby, a reception area a large storage area (with mezzanine break room)
- 50+ parking spaces
- Solid concrete block construction
- Visibility to Hwy. 316, Access to Collins Hill Exit & Buford Drive exit
- Hwy 316 traffic count – between 58,500 and 79,000 cars per day
- Collins Hill Rd, 11,000 cars per day
- Hurricane Shoals Rd shows 12,000 cars per day
- Zoned BG (General Business)
- AVAILABLE NOW, FOR SALE



Exclusive Agents

Jeff McMullen

770.380.6538 - Cell

jmcmullen@richardbowers.com



www.richardbowers.com

260 Peachtree Street, Suite 2400, Atlanta, GA 30303 | Phone (404) 816-1600 | Fax (404) 880-0077

The information contained herein has been received from sources deemed reliable but no liability is assumed by Richard Bowers & Co. or its agents for errors or omissions.