

WINDOW SCHEDULE

WINDOWS TO BE 2" x 4" FLUSH GLAZED STOREFRONT SYSTEM w/ 1" CLEAR INSULATED GLASS

A	7'-0" WIDE X 6'-0" HIGH	SEE DOOR SCHEDULE
B	4'-0" WIDE X 6'-0" HIGH	SEE DOOR SCHEDULE
C	6'-0" WIDE X 6'-0" HIGH	SEE DOOR SCHEDULE
D	12'-0" WIDE X 9'-0" HIGH	SEE DOOR SCHEDULE
E	4'-6" WIDE X 8'-0" HIGH	SEE DOOR SCHEDULE

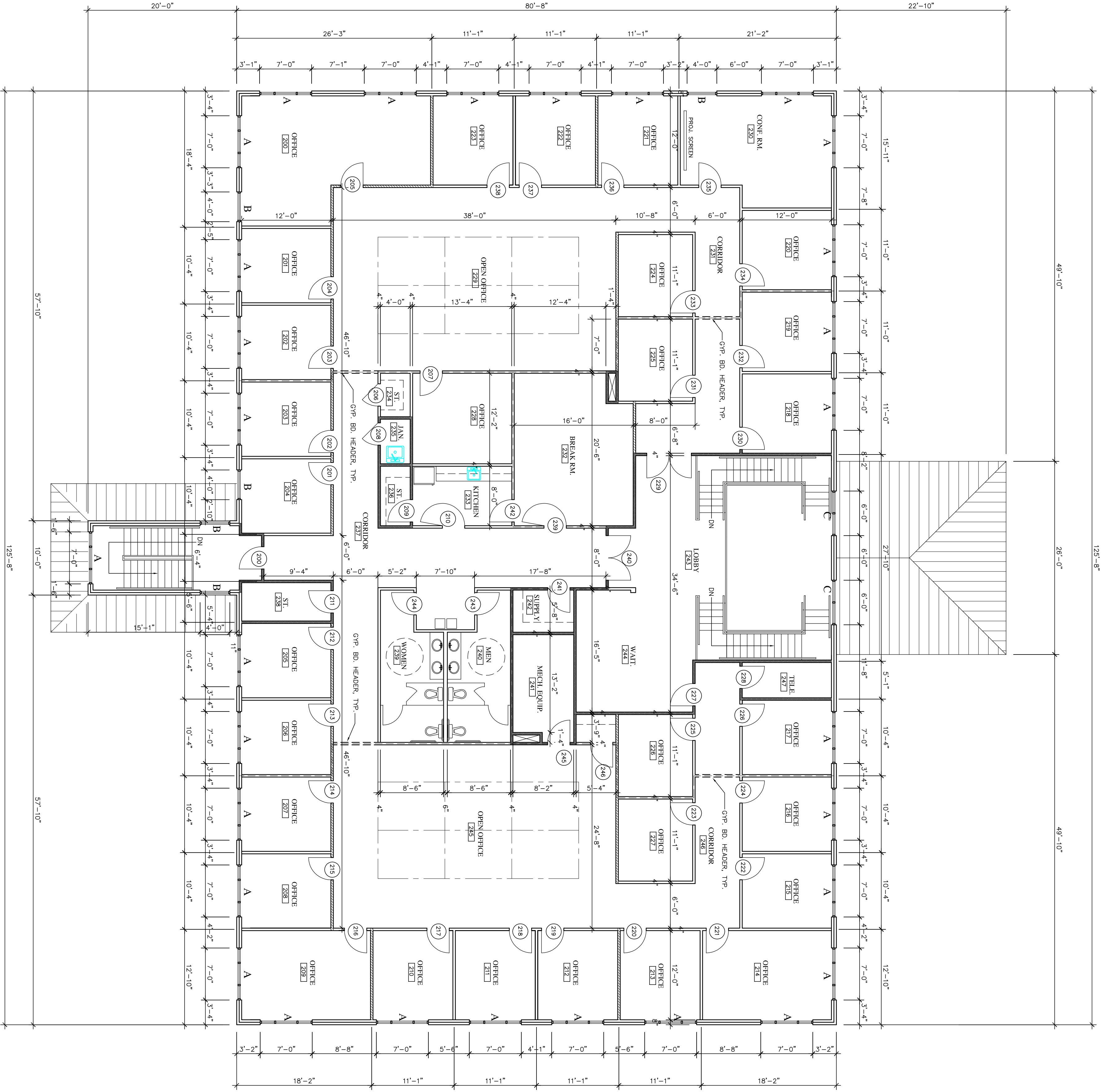
1st FLOOR PLAN
 1/8" = 1'-0"
 1 HOUR FIRE RATED WALLS
 LOAD BEARING WALLS

DRAWN: WCC
 APPROVED: WCC
 COMM. NO. 0309
 DATE: OCT 14, 2003
 REVISIONS:
 OCT. 23, 2003

SHEET NO. **A1**
 2 OF 13

Southern States Insurance Co.
 OFFICE BUILDING
 Douglasville, Georgia

Camp Architects, Inc.
 P.O. Box 3386, Atlanta, Georgia 404-523-2509



2nd FLOOR PLAN

- 1 HR. FIRE RATED WALLS
- LOAD BEARING WALLS
- SMOKE DRAFT ATTIC WALLS

DRAWN		WCC
APPROVED		WCC
COMM. NO.		0309
DATE		OCT 14, 2003
REVISIONS:		
OCT 23, 2003		

Southern States Insurance Co.
 OFFICE BUILDING
 Douglasville, Georgia

Camp Architects, Inc.
 P.O. Box 3386, Atlanta, Georgia 404-523-2509

SHEET TITLE
2nd FLOOR PLAN

SHEET NO.
A2

3 OF 13