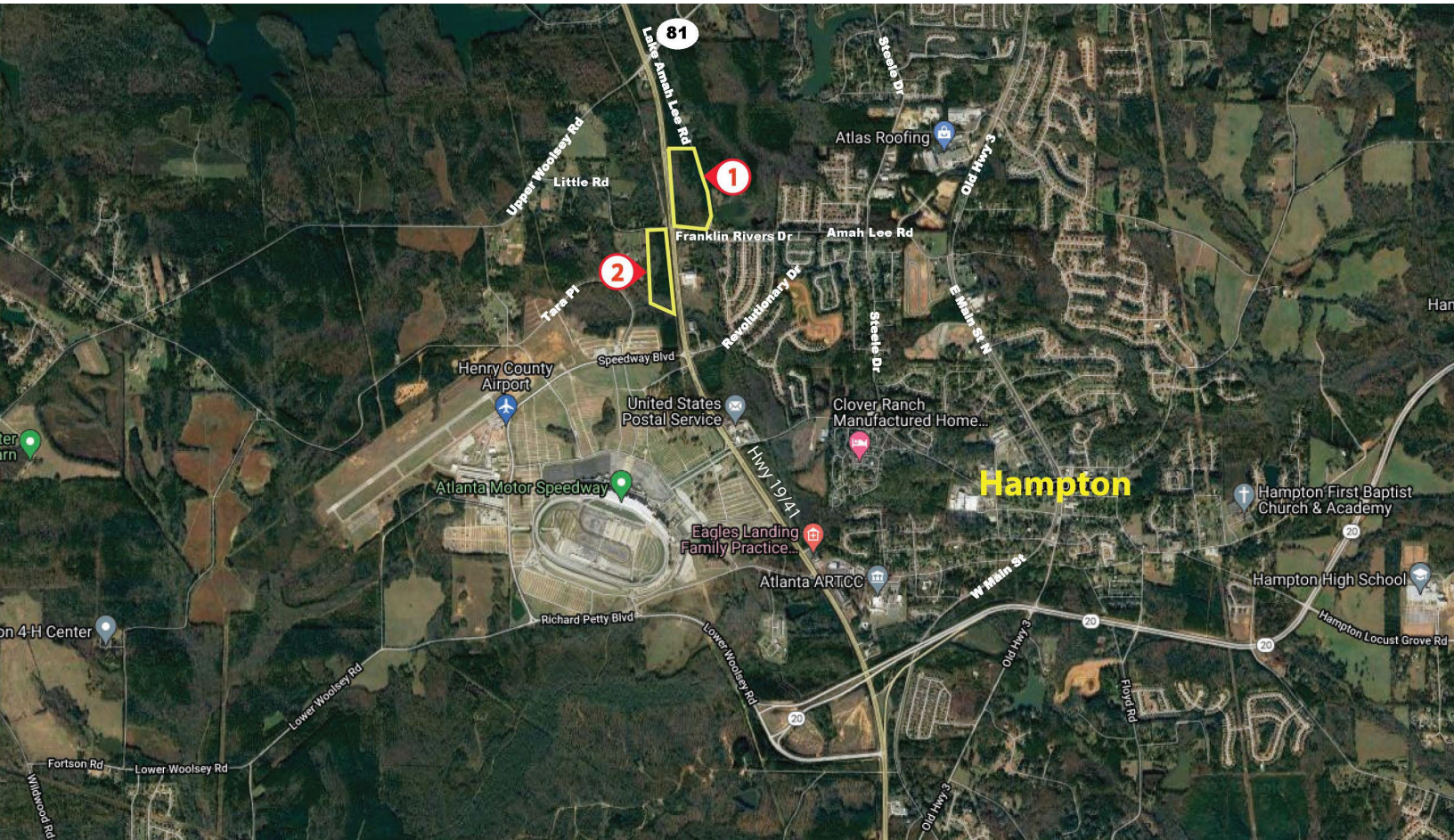


FOR SALE

± 41.52 Total Acres

NE & SW Side Of US HWY 41 & 19

Hampton, GA 30228

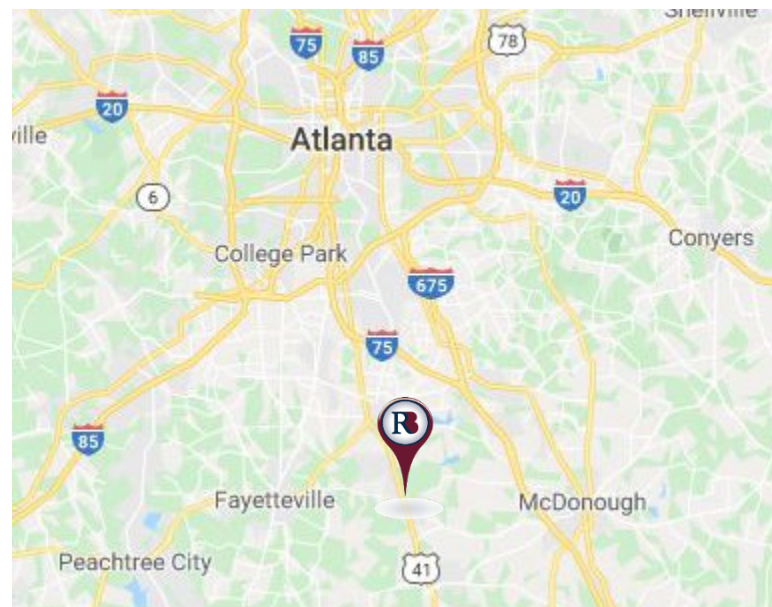


PROPERTY HIGHLIGHTS

- Total Acres: ± 41.52
- County: Unincorporated Henry
- Highway Corridor Overlay District

NE Parcel 1: Acres: ± 22.36
Zoned: RA (Residential Agricultural)

SW Parcel 2: Acres ± 19.16
Zoned: M1 (Light Manufacturing)



Richard Bowers & Co.
260 Peachtree Street | Suite 2400
Atlanta, GA 30303
(404) 816-1600
www.richardbowers.com



The information contained herein has been received from sources deemed reliable, but no liability is assumed by Richard Bowers & Co. or its agents for errors or omissions.

For More Information contact:

Michael Cheney, CCIM

(404) 644-6699 - Mobile

(404) 816-1600 - Office

mcheney@richardbowers.com