

3,270 RENTABLE
SQ. FOOTAGE

1 FIRST FLOOR
P-1 SCALE : 1/8" = 1'-0"

NOTE:
THIS PLAN WAS DRAWN W/O THE BENEFIT OF AN ON
SITE FIELD VERIFICATION. PRIOR TO CONSTRUCTION,
FACILITEC, INC. RECOMMENDS THAT A VERIFICATION
IS COMPLETED. IT WILL BE THE RESPONSIBILITY OF
THE G.C. TO NOTIFY FACILITEC, INC OF ANY PROBLEMS.
FACILITEC, INC. SHALL NOT BE HELD RESPONSIBLE
FOR ANY CODE INFRACTIONS DUE TO THIS MATTER.

ANY FURNITURE OR EQUIPMENT SHOWN IS NIC AND
ONLY SHOWN FOR PLANNING PURPOSES.

NOTE: DIMENSIONS ARE APPROXIMATE AND MAY
VARY SLIGHTLY WITH FIELD CONDITIONS.

PLEASE INDICATE THAT YOU HAVE REVIEWED THIS DOCUMENT CAREFULLY AND FIND THESE
SPECIFICATIONS AND INTENTIONS AS APPROVED FOR CONSTRUCTION BY SIGNING YOUR NAME
AND DATING BELOW.

SIGNED BY: _____ DATE: _____

PRELIMINARY PLAN
SHEET NO:
P-1

REV	DATE:	DISCRIPTION:
	00/00/21	PRELIM 1

DRAWN BY:

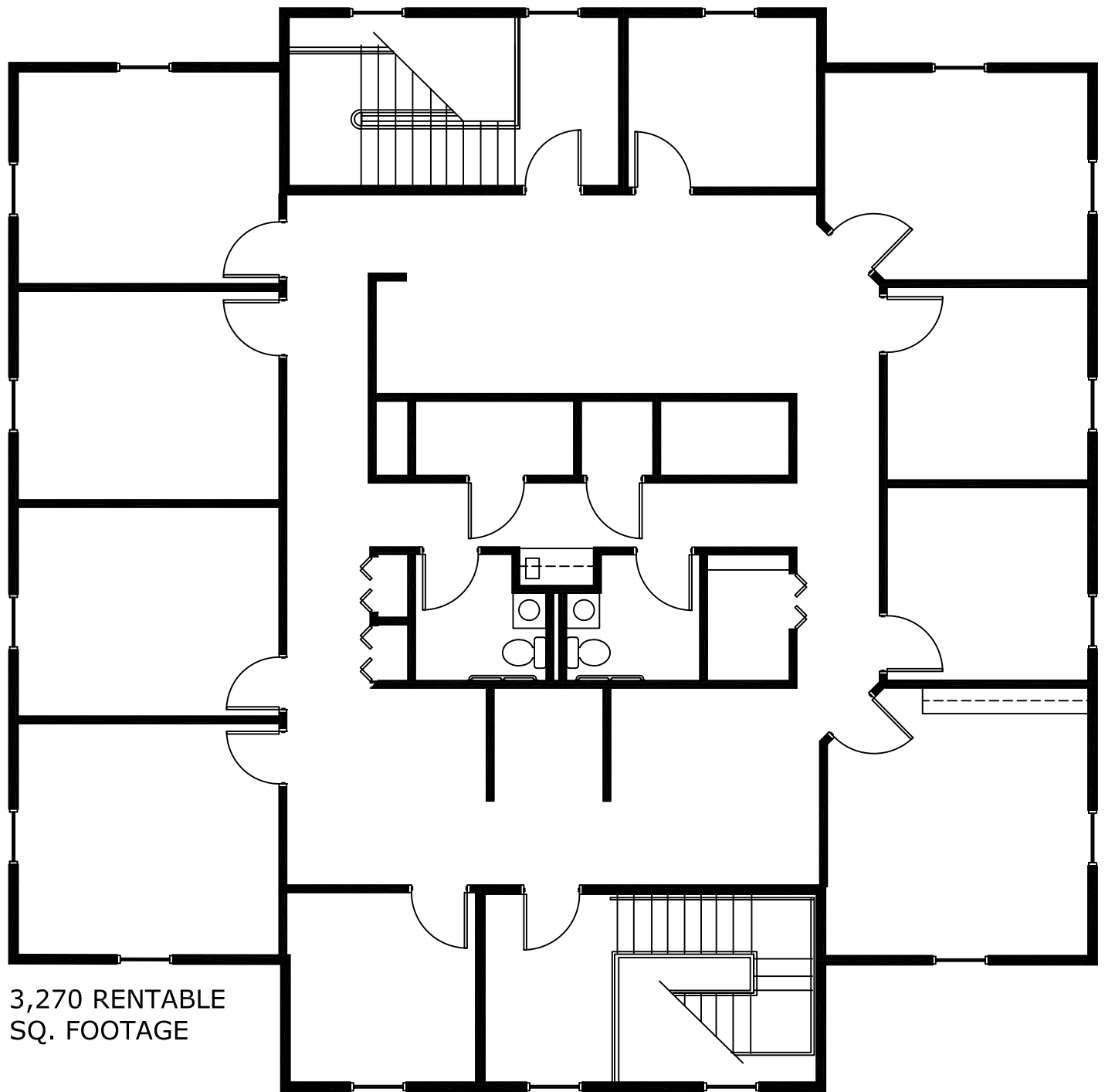
**4200 NORTHSIDE
PARKWAY
BUILDING 10**

FACILITEC
ARCHITECTURE + DESIGN INNOVATION



280 PEACHTREE STREET | SUITE 1100 | ATLANTA, GA 30303 | (404) 816-6464

THIS DRAWING IS THE
PROPERTY OF THE
DESIGNER AND MAY NOT
BE REPRODUCED OR
TRANSMITTED IN ANY
FORM OR BY ANY
MEANS, ELECTRONIC OR
MECHANICAL, WITHOUT THE
WRITTEN PERMISSION OF
FACILITEC, INC.



3,270 RENTABLE
SQ. FOOTAGE

1 SECOND FLOOR
P-1 SCALE : 1/8" = 1'-0"

NOTE:
THIS PLAN WAS DRAWN W/O THE BENEFIT OF AN ON
SITE FIELD VERIFICATION. PRIOR TO CONSTRUCTION,
FACILITEC, INC. RECOMMENDS THAT A VERIFICATION
IS COMPLETED. IT WILL BE THE RESPONSIBILITY OF
THE G.C. TO NOTIFY FACILITEC, INC OF ANY PROBLEMS.
FACILITEC, INC. SHALL NOT BE HELD RESPONSIBLE
FOR ANY CODE INFRACTIONS DUE TO THIS MATTER.

ANY FURNITURE OR EQUIPMENT SHOWN IS NIC AND
ONLY SHOWN FOR PLANNING PURPOSES.

NOTE: DIMENSIONS ARE APPROXIMATE AND MAY
VARY SLIGHTLY WITH FIELD CONDITIONS.

PLEASE INDICATE THAT YOU HAVE REVIEWED THIS DOCUMENT CAREFULLY AND FIND THESE
SPECIFICATIONS AND INTENTIONS AS APPROVED FOR CONSTRUCTION BY SIGNING YOUR NAME
AND DATING BELOW.

SIGNED BY:

DATE:

PRELIMINARY PLAN
SHEET NO:
P-1

REV	DATE:	DISCRIPTION:
	00/00/21	PRELIM 1

DRAWN BY:

**4200 NORTHSIDE
PARKWAY
BUILDING 10**

FACILITEC
ARCHITECTURE + DESIGN INNOVATION



260 PEACHTREE STREET | SUITE 1100 | ATLANTA, GA 30303 | (404) 816-6464

THIS DRAWING IS THE
PROPERTY OF THE
DESIGNER AND MAY NOT
BE REPRODUCED OR
USED WITHOUT THE
WRITTEN PERMISSION
©COPYRIGHT
FACILITEC, INC.