

FOR SALE

\$1,308,000

6,540 SF 1st & 2nd FLOOR OFFICE CONDO

4200 Northside Parkway

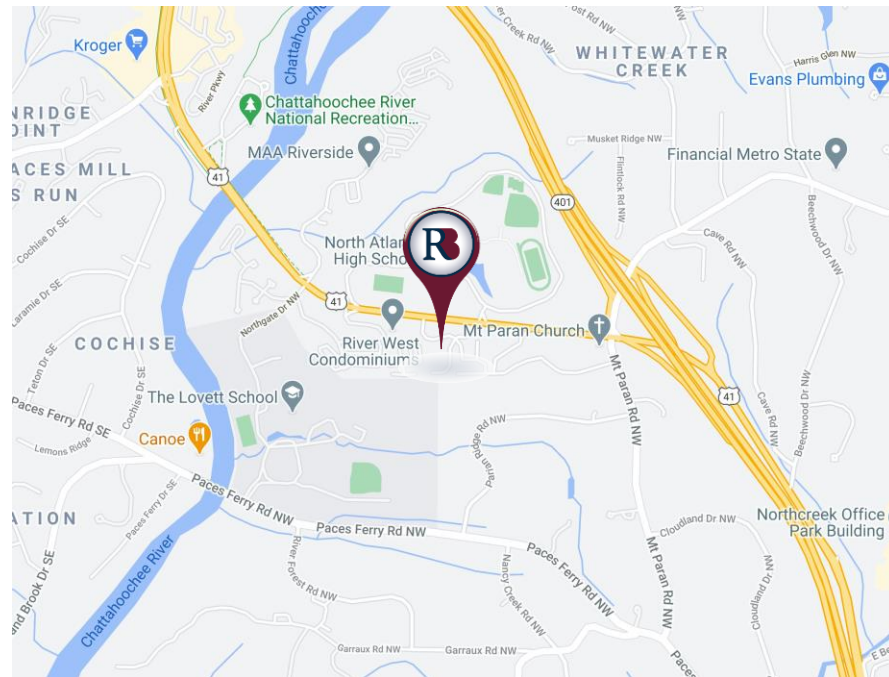
Building 10

Atlanta, GA 30327



PROPERTY HIGHLIGHTS

- ✓ Located within North Parkway Square Office complex consisting of 14 traditional brick & stucco office buildings
- ✓ 2-Story stucco building with lower-level totaling 9,810 SF
- ✓ 1st and 2nd floors totaling 6,540 SF are available at a sales price of \$1,308,000
- ✓ High quality Georgian style architectural development
- ✓ Prime Northwest Buckhead location off Northside Drive with easy accessibility to both I-75 and I-285
- ✓ Ample free parking
- ✓ Existing furniture, phone system, and artwork remain and are included in sales price
- ✓ On-site management, exterior signage, and high-speed internet



Richard Bowers & Co.
260 Peachtree Street | Suite 2400
Atlanta, GA 30303
(404) 816-1600
www.richardbowers.com



For More Information contact:

Randy Hoye
(404) 295-0908 - Mobile
(404) 816-1600 Ext. 111 Office
rhoye@richardbowers.com

Richard Bowers, SIOR
(404) 406-9706 - Mobile
(404) 816-1600 Ext. 117 - Office
rbowers@richardbowers.com

FOR SALE

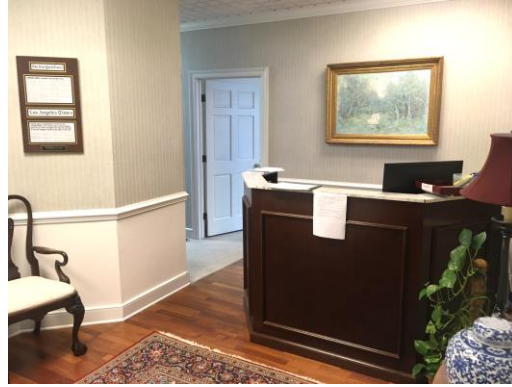
\$1,308,000

6,540 SF 1st & 2nd FLOOR OFFICE CONDO

4200 Northside Parkway

Building 10

Atlanta, GA 30327



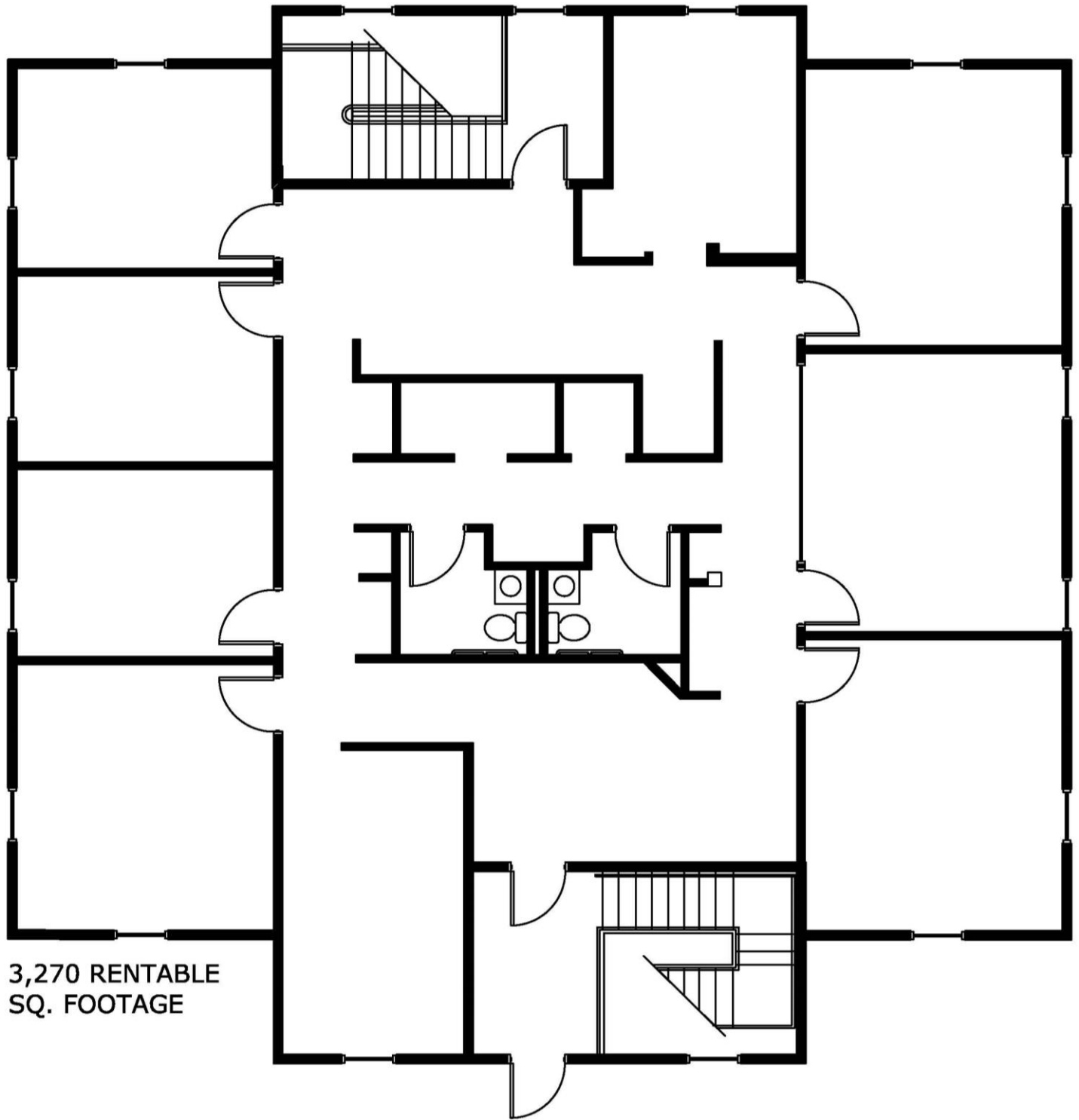
Richard Bowers & Co.
260 Peachtree Street | Suite 2400
Atlanta, GA 30303
(404) 816-1600
www.richardbowers.com



For More Information contact:

Randy Hoye
(404) 295-0908 - Mobile
(404) 816-1600 Ext. 111 Office
rhoye@richardbowers.com

Richard Bowers, SIOR
(404) 406-9706 - Mobile
(404) 816-1600 Ext 117 - Office
rbowers@richardbowers.com



**3,270 RENTABLE
SQ. FOOTAGE**

1 FIRST FLOOR
P-1 SCALE : 1/8" = 1'-0"

NOTE:
THIS PLAN WAS DRAWN W/O THE BENEFIT OF AN ON SITE FIELD VERIFICATION. PRIOR TO CONSTRUCTION, FACILITEC, INC. RECOMMENDS THAT A VERIFICATION IS COMPLETED. IT WILL BE THE RESPONSIBILITY OF THE G.C. TO NOTIFY FACILITEC, INC OF ANY PROBLEMS. FACILITEC, INC. SHALL NOT BE HELD RESPONSIBLE FOR ANY CODE INFRACTIONS DUE TO THIS MATTER.

ANY FURNITURE OR EQUIPMENT SHOWN IS NIC AND ONLY SHOWN FOR PLANNING PURPOSES.

NOTE: DIMENSIONS ARE APPROXIMATE AND MAY VARY SLIGHTLY WITH FIELD CONDITIONS.

PLEASE INDICATE THAT YOU HAVE REVIEWED THIS DOCUMENT CAREFULLY AND FIND THESE SPECIFICATIONS AND INTENTIONS AS APPROVED FOR CONSTRUCTION BY SIGNING YOUR NAME AND DATING BELOW.

SIGNED BY:

DATE:



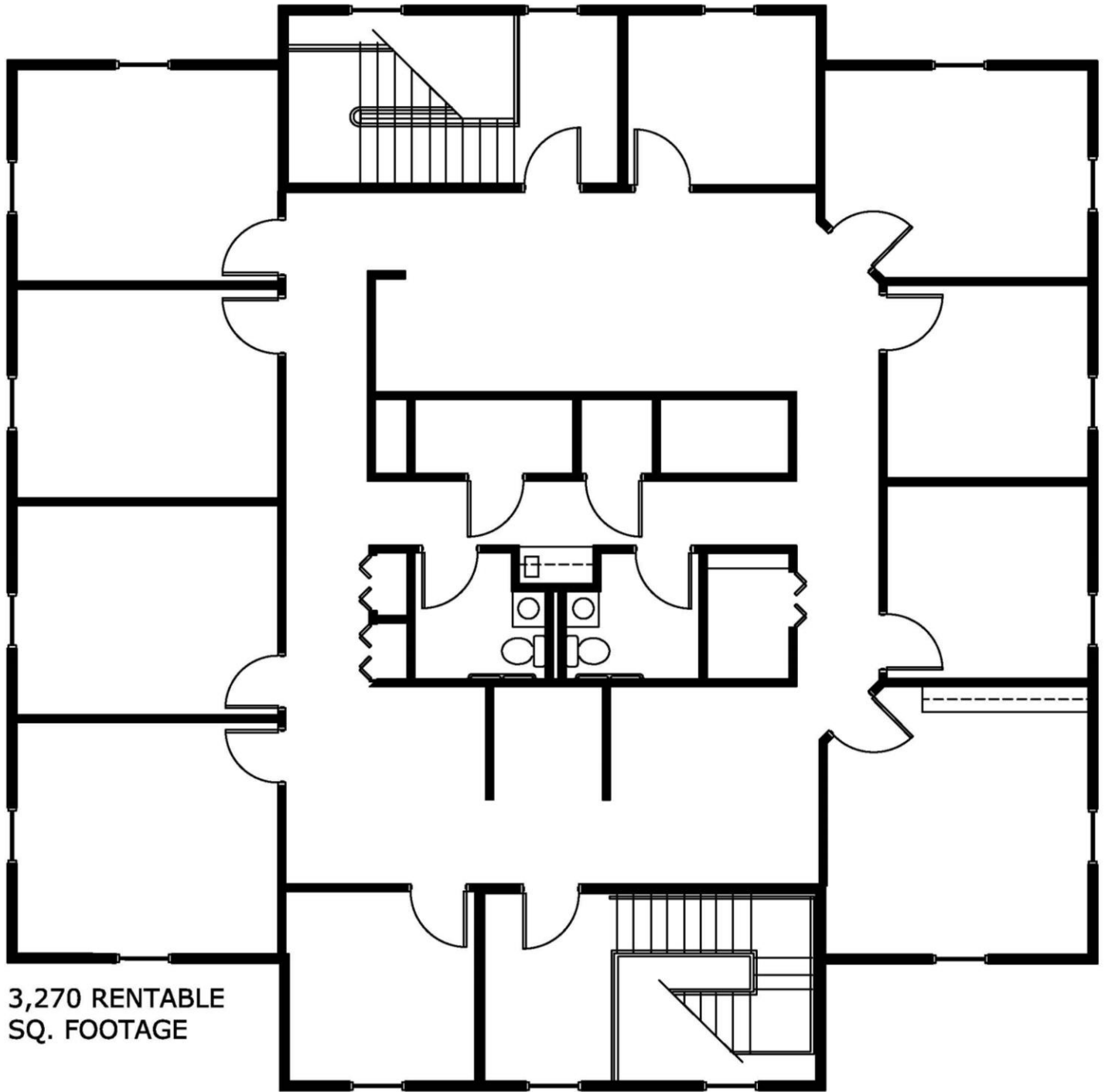
Richard Bowers & Co.
260 Peachtree Street | Suite 2400
Atlanta, GA 30303
(404) 816-1600
www.richardbowers.com



For More Information contact:

Randy Hoye
(404) 295-0908 - Mobile
(404) 816-1600 Ext. 111 Office
rhyoe@richardbowers.com

Richard Bowers, SIOR
(404) 406-9706 - Mobile
(404) 816-1600 Ext 117 - Office
rbowers@richardbowers.com



3,270 RENTABLE
SQ. FOOTAGE

1 SECOND FLOOR
P-1 SCALE : 1/8" = 1'-0"

NOTE:
THIS PLAN WAS DRAWN W/O THE BENEFIT OF AN ON
SITE FIELD VERIFICATION. PRIOR TO CONSTRUCTION,
FACILITEC, INC. RECOMMENDS THAT A VERIFICATION
IS COMPLETED. IT WILL BE THE RESPONSIBILITY OF
THE G.C. TO NOTIFY FACILITEC, INC OF ANY PROBLEMS.
FACILITEC, INC. SHALL NOT BE HELD RESPONSIBLE
FOR ANY CODE INFRACTIONS DUE TO THIS MATTER.

ANY FURNITURE OR EQUIPMENT SHOWN IS NIC AND
ONLY SHOWN FOR PLANNING PURPOSES.

NOTE: DIMENSIONS ARE APPROXIMATE AND MAY
VARY SLIGHTLY WITH FIELD CONDITIONS.

PLEASE INDICATE THAT YOU HAVE REVIEWED THIS DOCUMENT CAREFULLY AND FIND THESE
SPECIFICATIONS AND INTENTIONS AS APPROVED FOR CONSTRUCTION BY SIGNING YOUR NAME
AND DATING BELOW.
SIGNED BY: _____ DATE: _____