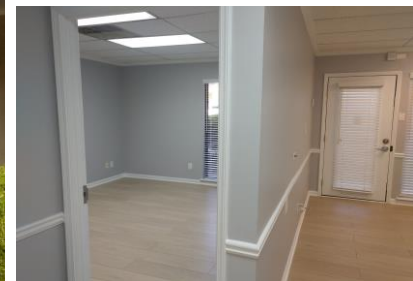


FOR SALE

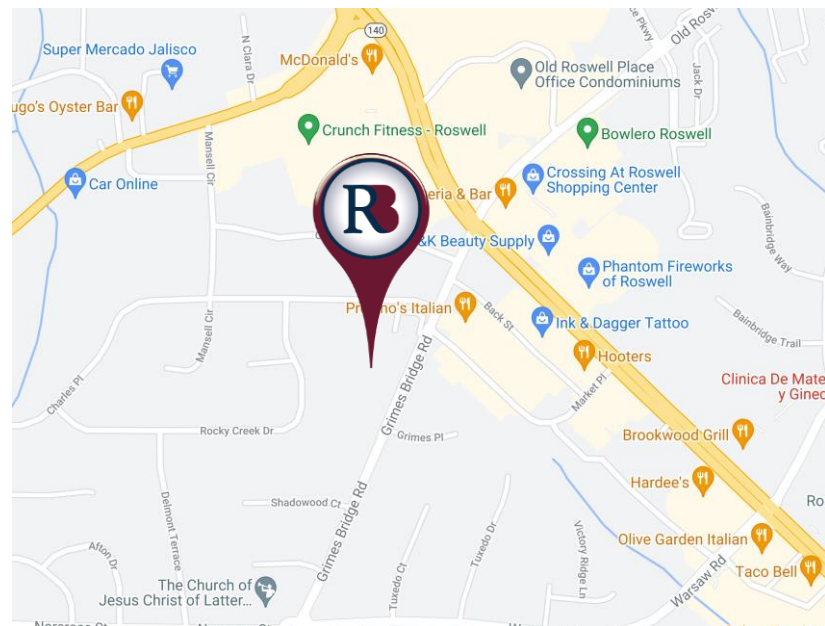
768 SF OFFICE CONDO
\$155,000.00

1180 GRIMES BRIDGE ROAD
SUITE 200
Roswell, GA 30075



PROPERTY HIGHLIGHTS

- ✓ Approximately 768 SF in Move in Ready condition
- ✓ **Affordably priced at \$155,000.00**
- ✓ Convenient to Holcomb Bridge and Highway 9 (Alpharetta Hwy)
- ✓ Fully remodeled flooring, ceiling tiles, natural paint, and updated lighting.
- ✓ Active but quiet office park with a mix of office and service professionals
- ✓ Plenty of restaurants and retailers, and the City of Roswell are all near-by
- ✓ Perfect for beginning Medical practitioners, CPAs, Attorneys, or service companies.



Richard Bowers & Co.
260 Peachtree Street | Suite 2400
Atlanta, GA 30303
(404) 816-1600
www.richardbowers.com



For More Information contact:

Jeff McMullen
(770) 380-6538 - Mobile
(404) 816-1600 ext. 145 Office
jmcullen@richardbowers.com

FOR SALE

768 SF OFFICE CONDO

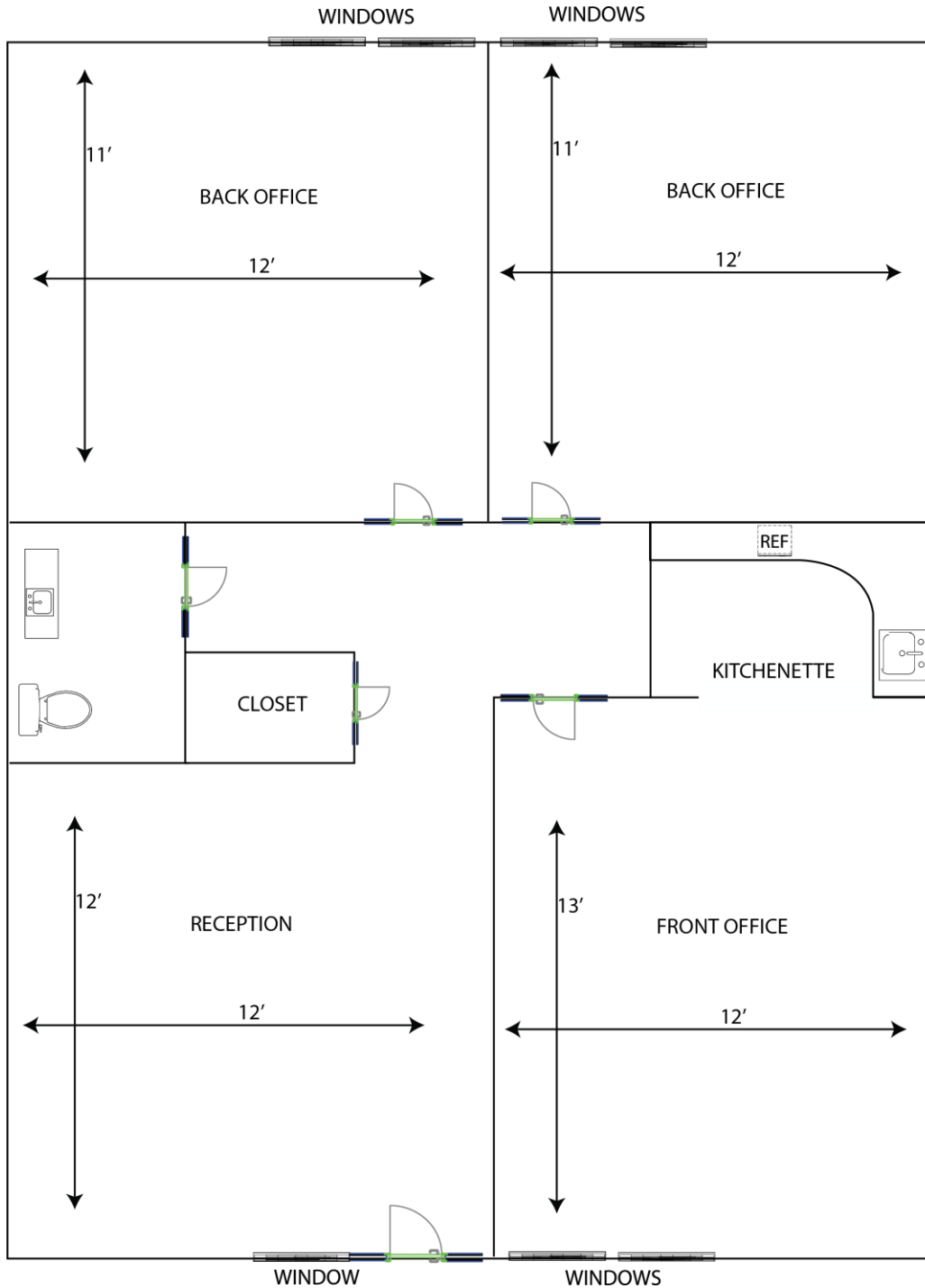
\$155,000.00

1180 GRIMES BRIDGE ROAD

SUITE 200

Roswell, GA 30075

SPACE FLOOR PLAN



Richard Bowers & Co.
260 Peachtree Street | Suite 2400
Atlanta, GA 30303
(404) 816-1600
www.richardbowers.com



For More Information contact:

Jeff McMullen
(770) 380-6538 - Mobile
(404) 816-1600 ext. 145 Office
jmcmullen@richardbowers.com