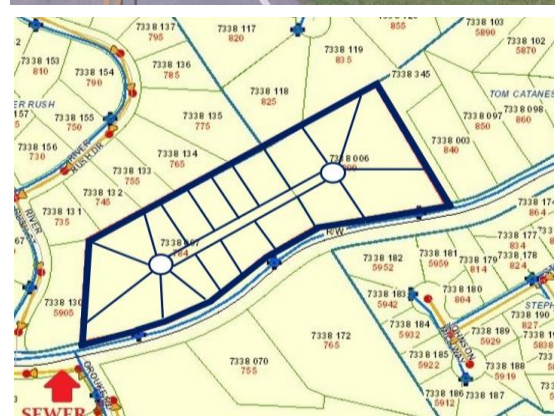
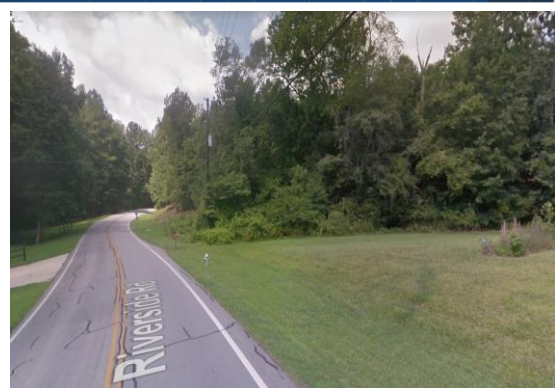


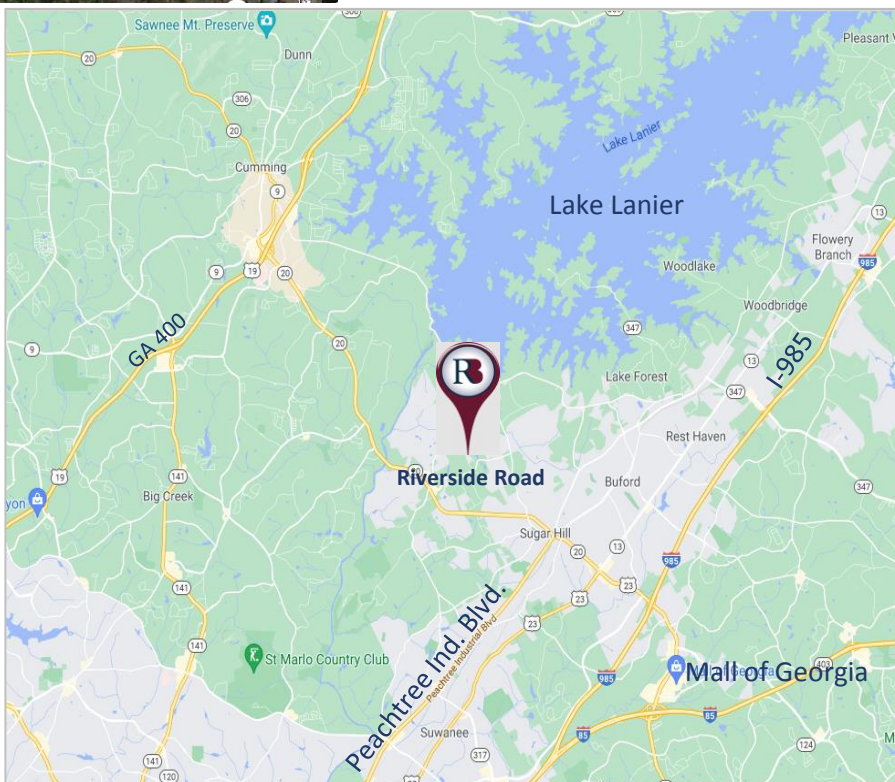
LAND FOR SALE
±7.5 Acres
\$800,000.00

800 Riverside Road
Sugar Hill, GA 30518
Gwinnett County



Property Highlights

- Potential Residential Development
- Two parcels totaling ±7.5 Acres
- Price: \$800,000.00
- Zoned: R-100 (Residential)
- All Utilities Available
- Frontage: 1,141.4 FT on Riverside Road
- Perfect for small cluster homes or up to 9 septic lots
- Rolling topography
- No Flood Plain



Richard Bowers & Co.
260 Peachtree Street | Suite 2400
Atlanta, GA 30303
(404) 816-1600
www.richardbowers.com



For More Information contact:

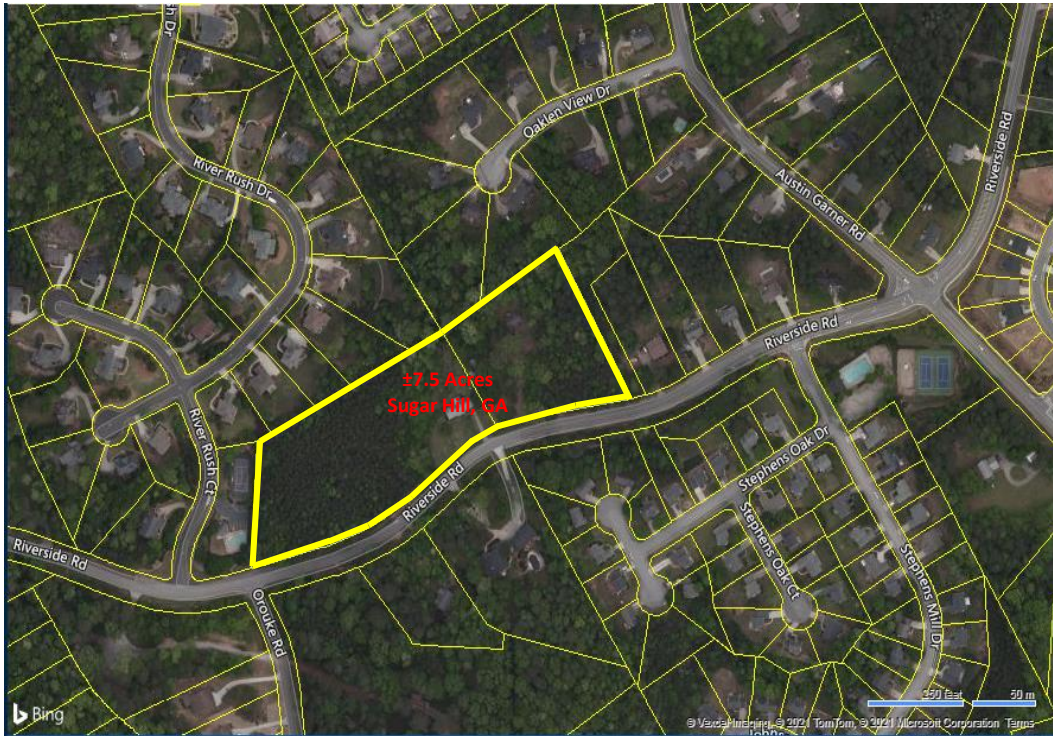
Lee Coleman
o) 404-816-1600 Ext. 130
lc Coleman@richardbowers.com

Paul Mendel, CPM
m) 404-787-7967
pmendel@rbmanagement.com

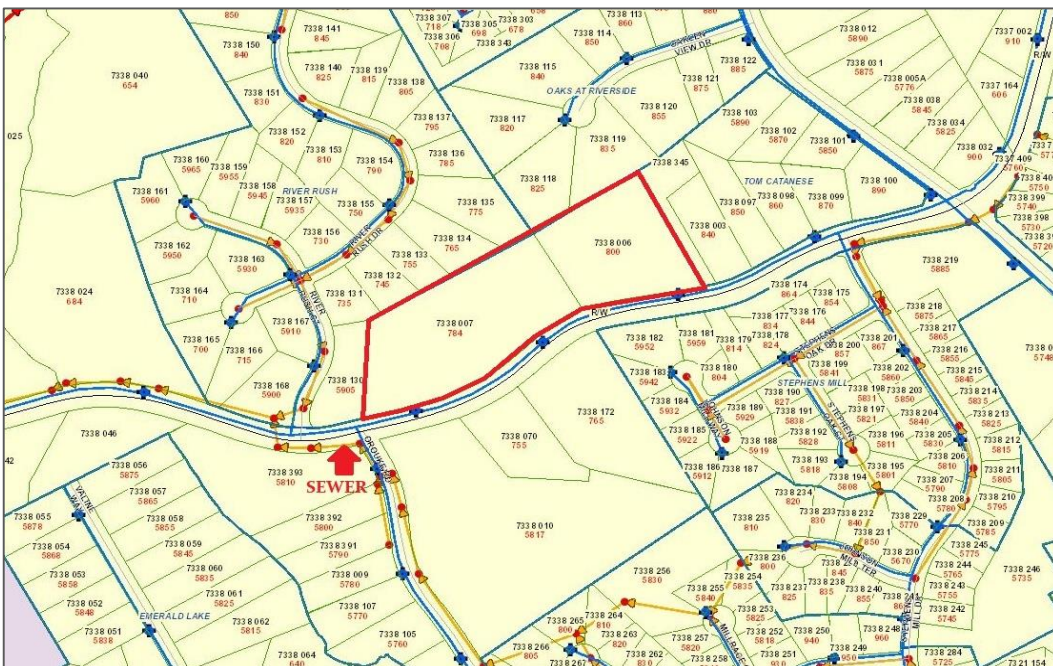
LAND FOR SALE
±7.5 Acres
\$800,000.00

800 Riverside Road
Sugar Hill, GA 30518
Gwinnett County

Plat Map



Utility Map



Richard Bowers & Co.
260 Peachtree Street | Suite 2400
Atlanta, GA 30303
(404) 816-1600
www.richardbowers.com



For More Information contact:

Lee Coleman
o) 404-816-1600 Ext. 130
lc Coleman@richardbowers.com

Paul Mendel, CPM
m) 404-787-7967
pmendel@rbmanagement.com