

LAND FOR SALE

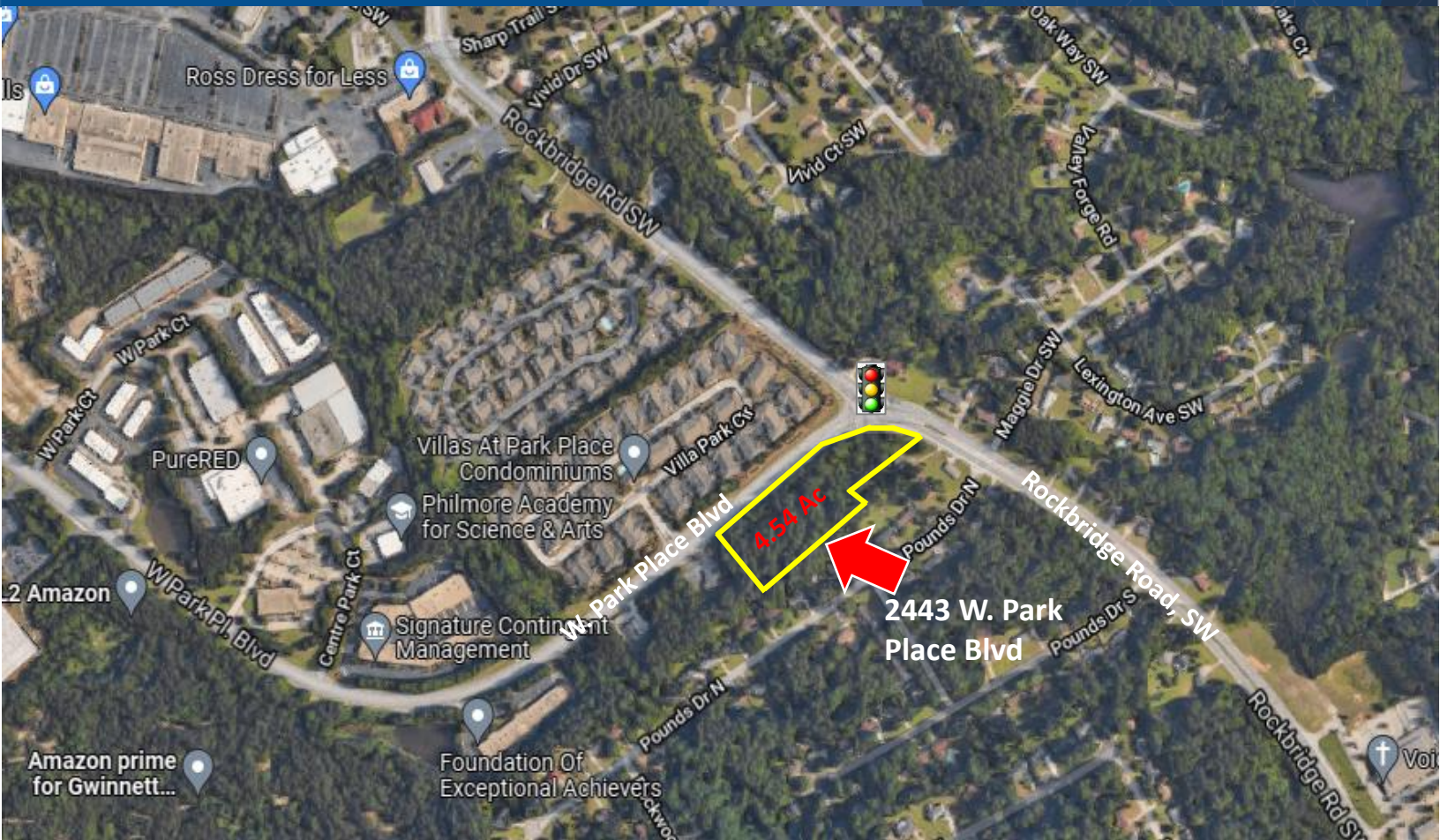
4.54 Acres

\$1,950,000.00

2443 W. Park Place Blvd

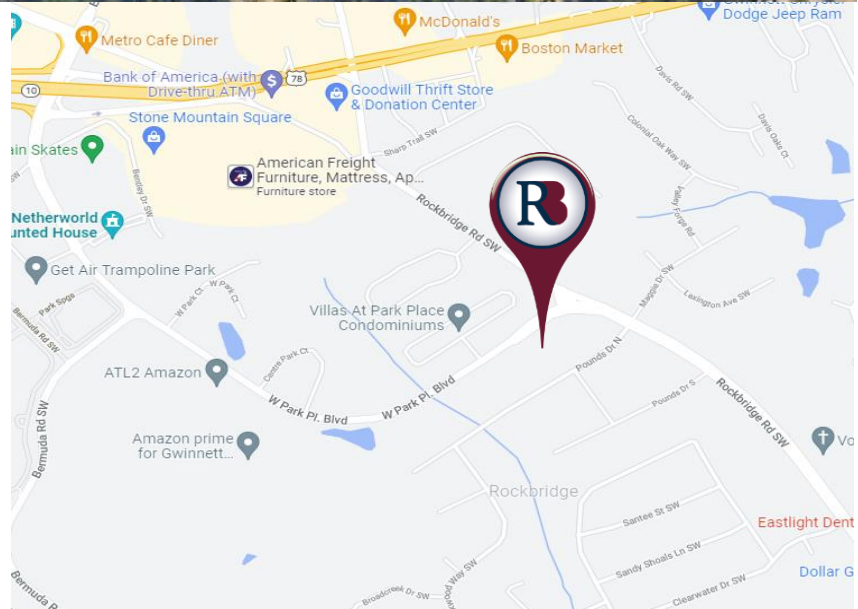
Gwinnett County

Stone Mountain, GA 30087



PROPERTY HIGHLIGHTS

- ✓ Approximately 4.54 Acres for Sale
- ✓ Potential Townhouse Development
- ✓ All Utilities Available Including Sewer
- ✓ Frontage: 730 ft. on W. Park Place Blvd
- ✓ Zoning: O&I- Office/Institutional
- ✓ Signaled Intersection
- ✓ Close Proximity to Amazon Fulfillment Ctr
- ✓ Located less than 1 mile from Stone Mountain Hwy (Hwy 78) and Stone Mountain Park



The information contained herein has been received from sources deemed reliable, but no liability is assumed by Richard Bowers & Co. or its agents for errors or omissions.



Richard Bowers & Co.
260 Peachtree Street | Suite 2400
Atlanta, GA 30303
(404) 816-1600
www.richardbowers.com



For More Information contact:

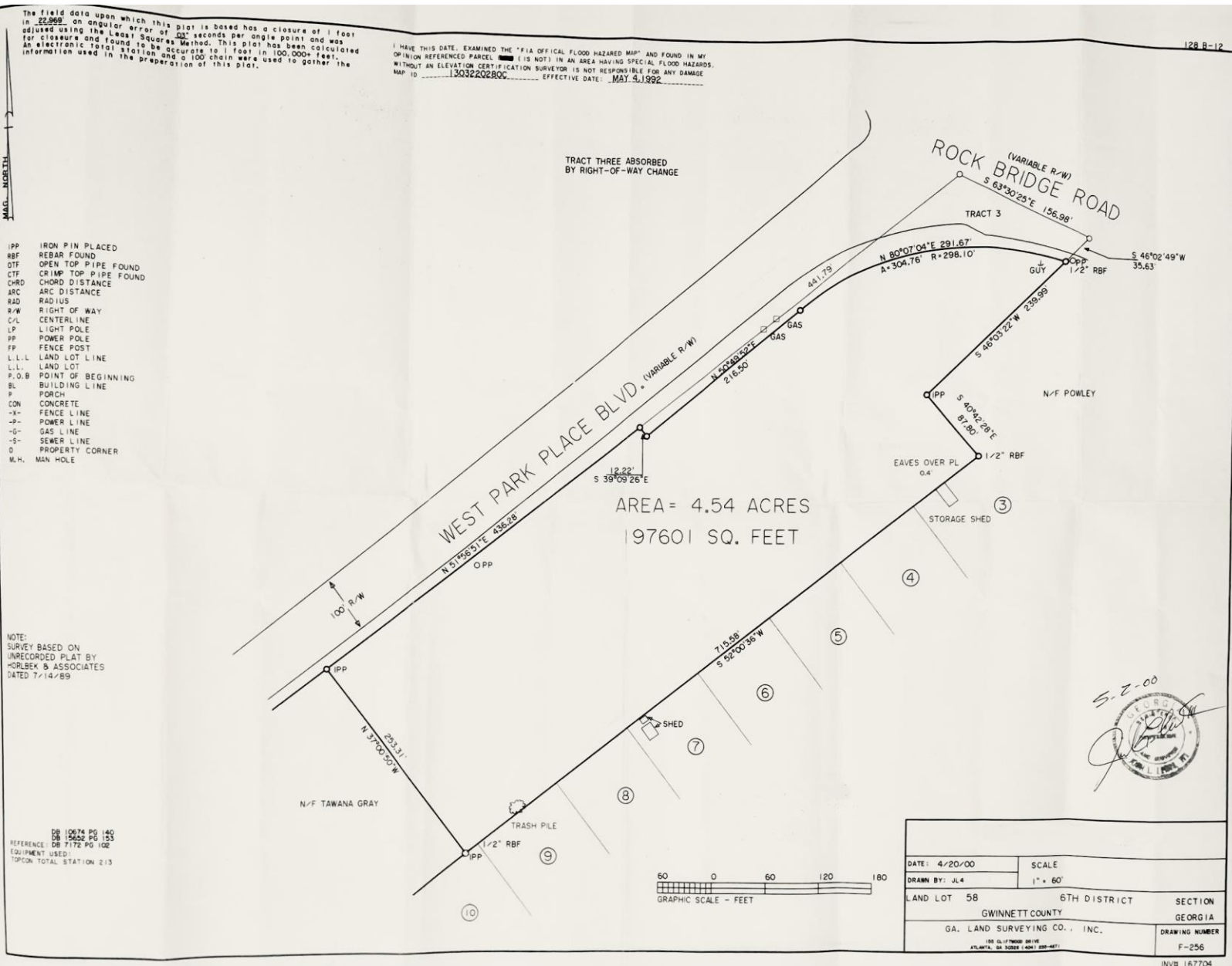
Lee Coleman
o) 404-816-1600 Ext. 130
m) 678-575-3096
lc Coleman@richardbowers.com

Randy Hoyer
o) 404-816-1600 ext. 111
m) 404-295-0908
rhoyer@richardbowers.com

LAND FOR SALE
4.54 Acres
\$1,950,000.00

2443 W. Park Place Blvd
Gwinnett County
Stone Mountain, GA 30087

SURVEY



The information contained herein has been received from sources deemed reliable, but no liability is assumed by Richard Bowers & Co. or its agents for errors or omissions.



Richard Bowers & Co.
 260 Peachtree Street | Suite 2400
 Atlanta, GA 30303
 (404) 816-1600
www.richardbowers.com



For More Information contact:

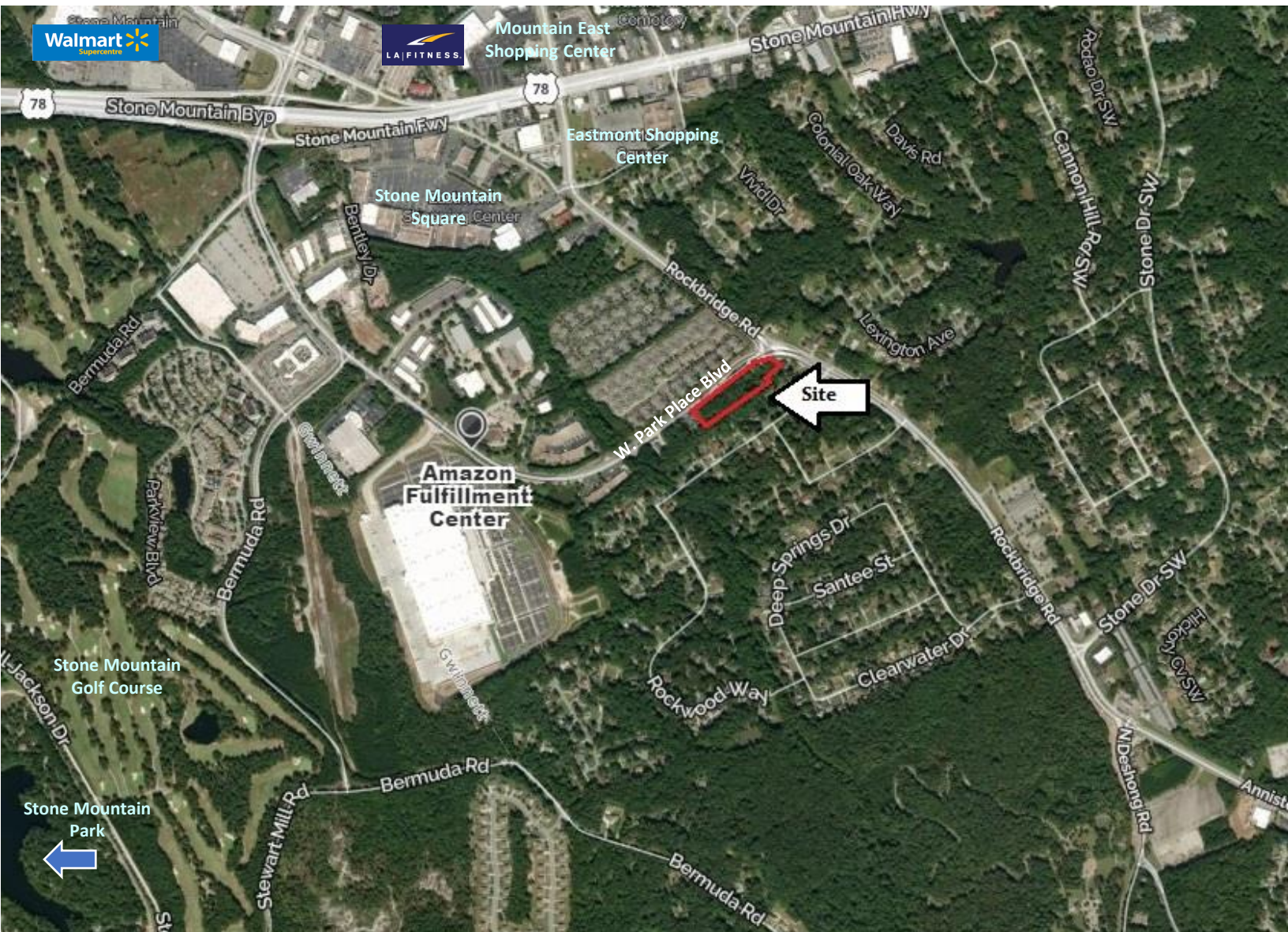
Lee Coleman
 o) 404-816-1600 Ext. 130
 m) 678-575-3096
lc Coleman@richardbowers.com

Randy Hoyer
 o) 404-816-1600 ext. 111
 m) 404-295-0908
rhoyer@richardbowers.com

LAND FOR SALE
4.54 Acres
\$1,950,000.00

2443 W. Park Place Blvd
Gwinnett County
Stone Mountain, GA 30087

Aerial



The information contained herein has been received from sources deemed reliable, but no liability is assumed by Richard Bowers & Co. or its agents for errors or omissions.



Richard Bowers & Co.
260 Peachtree Street | Suite 2400
Atlanta, GA 30303
(404) 816-1600
www.richardbowers.com



For More Information contact:

Lee Coleman
o) 404-816-1600 Ext. 130
m) 678-575-3096
lc Coleman@richardbowers.com

Randy Hoye
o) 404-816-1600 ext. 111
m) 404-295-0908
rhoye@richardbowers.com

LAND FOR SALE
4.54 Acres
\$1,950,000.00

2443 W. Park Place Blvd
Gwinnett County
Stone Mountain, GA 30087

Street Views



The information contained herein has been received from sources deemed reliable, but no liability is assumed by Richard Bowers & Co. or its agents for errors or omissions.



Richard Bowers & Co.
260 Peachtree Street | Suite 2400
Atlanta, GA 30303
(404) 816-1600
www.richardbowers.com



For More Information contact:

Lee Coleman
o) 404-816-1600 Ext. 130
m) 678-575-3096
lcoleman@richardbowers.com

Randy Hoye
o) 404-816-1600 ext. 111
m) 404-295-0908
rhoye@richardbowers.com