

RETAIL FOR LEASE

±2,112 SF

Available 6/1/23 with 30 Day Notice

Marsh Creek Village

Building D, Suite 110

6780 Roswell Rd

Atlanta, GA 30328



Property Highlights

- Marsh Creek Village Shopping Center Building D, Suite 110- 2,112 SF- 1st Floor
- This space is currently an Event Space, but has many possibilities
- Available After June 1, 2023, With 30- Day Notice
- Rental Rate: \$28.00 PSF + \$7.00 NNN
- Great location in Sandy Springs with Strong Visibility and over 600 feet of frontage on Roswell Road
- Easy Ingress/Egress
- Traffic Count: 30,000+ cars per day on Roswell Road

KEY FACTS



2.1
Average Household Size

93,955
Population



37
Median Age

ROSWELL ROAD TRAFFIC COUNT



32,800 Per Day

ANNUAL GROWTH RATE



1.5%

BUSINESS



175,200
Total Daytime Population



134,380
Total Employees

INCOME



\$ 87,286
Median Household Income



\$60,566
Per Capita Income

The information contained herein has been received from sources considered reliable, but no liability is assumed by Richard Bowers & Co. or its Agents for errors and omissions.



Richard Bowers & Co.
260 Peachtree Street | Suite 2400
Atlanta, GA 30303
(404) 816-1600
www.richardbowers.com



For More Information contact

Exclusive Agent:

Jeff McMullen
(770) 380-6538 - Mobile
(jmcullen@richardbowers.com)

RETAIL FOR LEASE

±2,112 SF

Available 6/1/23 with 30 Day Notice

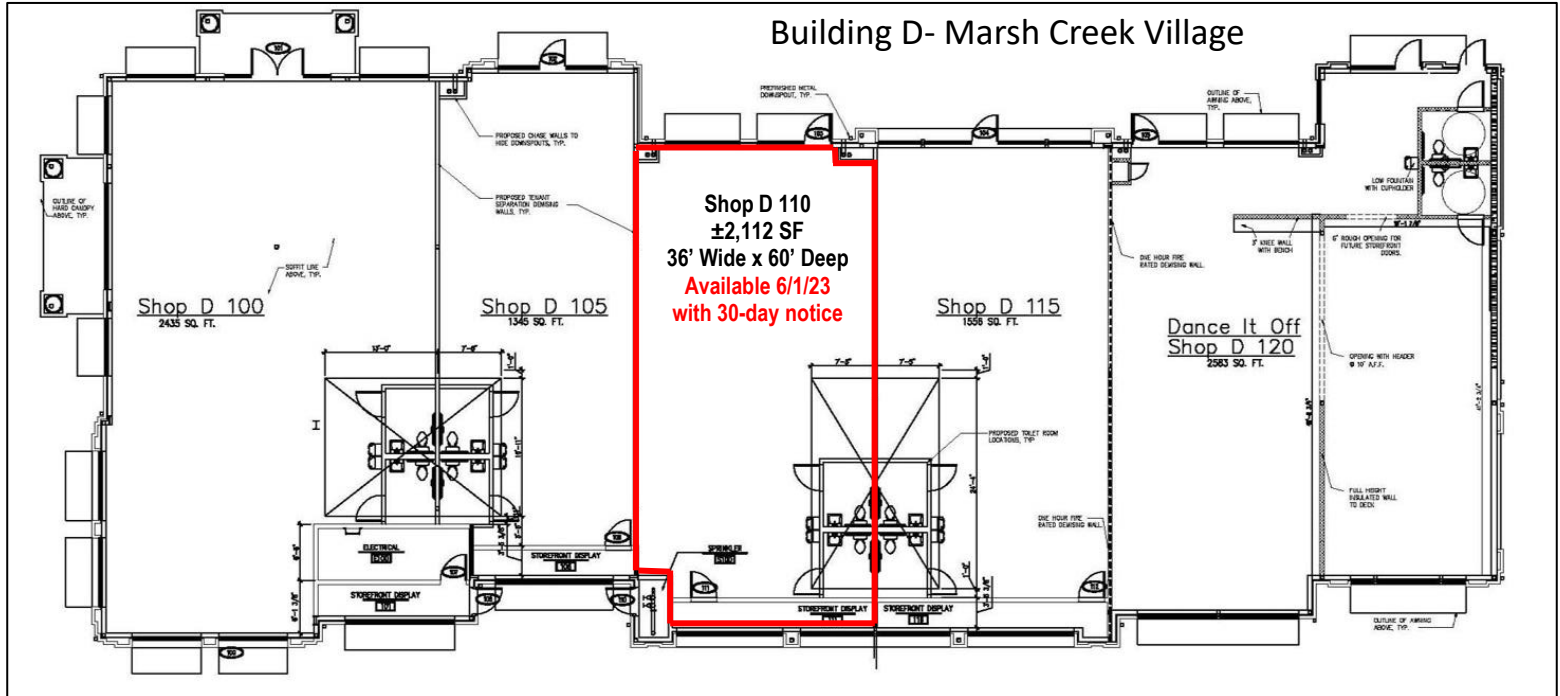
Marsh Creek Village

Building D, Suite 110

6780 Roswell Rd

Atlanta, GA 30328

SITE PLAN/ PHOTOS



Exterior- Store Front, Suite D-110



Interior Suite D-110

The information contained herein has been received from sources considered reliable, but no liability is assumed by Richard Bowers & Co. or its Agents for errors and omissions.



Richard Bowers & Co.
260 Peachtree Street | Suite 2400
Atlanta, GA 30303
(404) 816-1600
www.richardbowers.com



For More Information contact

Exclusive Agent:

Jeff McMullen

(770) 380-6538 - Mobile

jmcmullen@richardbowers.com

RETAIL FOR LEASE

±2,112 SF

Available 6/1/23 with 30 Day Notice

Marsh Creek Village

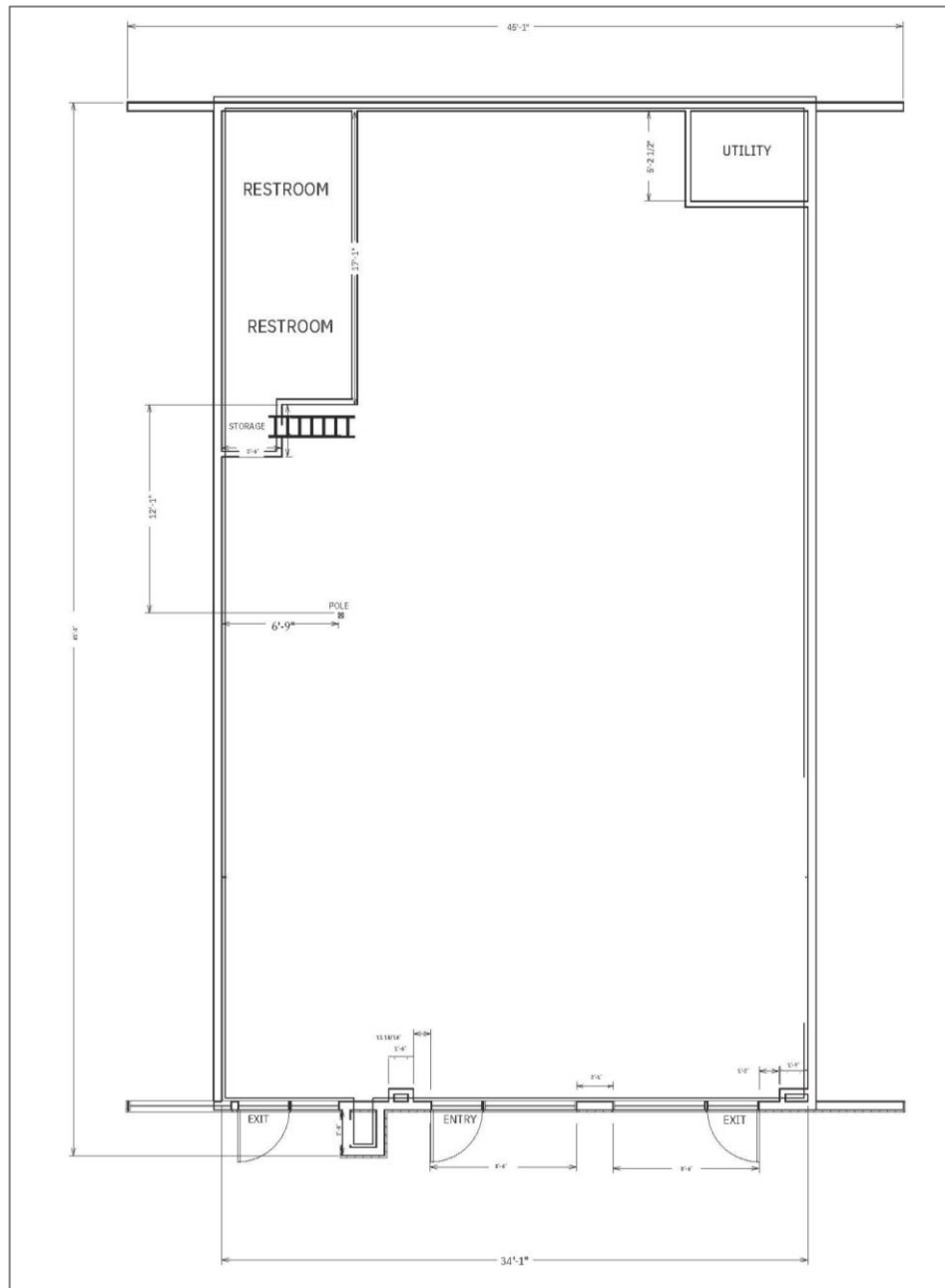
Building D, Suite 110

6780 Roswell Rd

Atlanta, GA 30328

FLOOR PLAN

Suite D-110, ± 2,112 SF



The information contained herein has been received from sources considered reliable, but no liability is assumed by Richard Bowers & Co. or its Agents for errors and omissions.



Richard Bowers & Co.
260 Peachtree Street | Suite 2400
Atlanta, GA 30303
(404) 816-1600
www.richardbowers.com



For More Information contact

Exclusive Agent:

Jeff McMullen
(770) 380-6538 - Mobile
jmcmullen@richardbowers.com