

FOR LEASE

Marsh Creek Village Shopping Center

Retail Suite C-105 & C-109

6780 Roswell Road, Suite C-105 & C-109

± 1,137 SF - ± 1,028 SF

Atlanta, GA 30328



Property Highlights

- Marsh Creek Village Shopping Center
- Building "C": ± 1,137 SF – ±1,028 SF
- Total SF ±2,165 SF, **both suites are available separately or combined**
- Suite C-105 & C-109 (\$29.00 PSF + \$8.00 NNNs) **Available Now!**
- Great location in Sandy Springs with strong visibility and over 600 feet of frontage on Roswell Road
- Buildings built in 2010, Easy Ingress/Egress
- Over 30,000 cars per day pass by on Roswell Road

KEY FACTS



101,031
Population

36.2

Median Age

ROSWELL ROAD TRAFFIC COUNT



35,500 per day

ANNUAL GROWTH RATE



1.98 %

BUSINESS



190,490
Total Daytime Population



148,653
Total Employees

INCOME



\$107,744
Median Household Income



\$74,964
Per Capita Income

The information contained herein has been received from sources considered reliable, but no liability is assumed by Richard Bowers & Co. or its Agents for errors and omissions.



Richard Bowers & Co.
260 Peachtree Street | Suite 2400
Atlanta, GA 30303
(404) 816-1600
www.richardbowers.com



For More Information contact

Exclusive Agent:

Jeff McMullen
(770) 380-6538 - Mobile
jmcullen@richardbowers.com

FOR LEASE

Marsh Creek Village Shopping Center

Retail Suite C-105 & C-109

6780 Roswell Road, Suite C-105 – C-109

± 1,137 SF - ± 1,028 SF

Atlanta, GA 30328

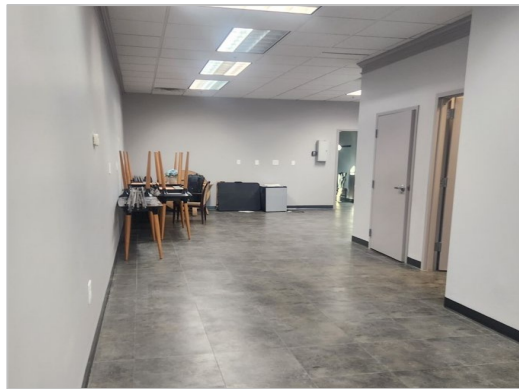
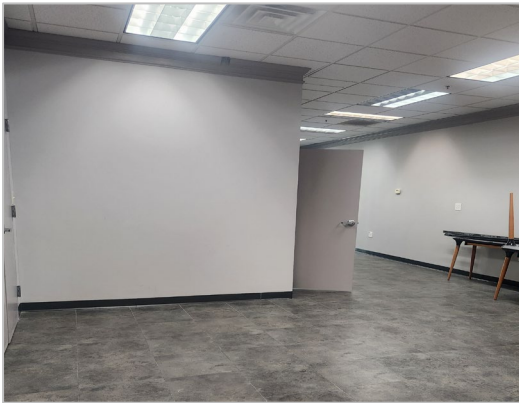
Building C- Suite 105-109

±1,137 – ±1,028 SF

Suite C-109 - Exterior & Interior



Suite C-105 - Exterior & Interior



The information contained herein has been received from sources considered reliable, but no liability is assumed by Richard Bowers & Co. or its Agents for errors and omissions.



Richard Bowers & Co.
260 Peachtree Street | Suite 2400
Atlanta, GA 30303
(404) 816-1600
www.richardbowers.com



For More Information contact:

Exclusive Agent:

Jeff McMullen
(770) 380-6538 - Mobile
jmcmullen@richardbowers.com

FOR LEASE

Marsh Creek Village Shopping Center

Retail Suite C-105 & C-109

6780 Roswell Road, Suite C-105 – C-109

± 1,137 SF - ± 1,028 SF

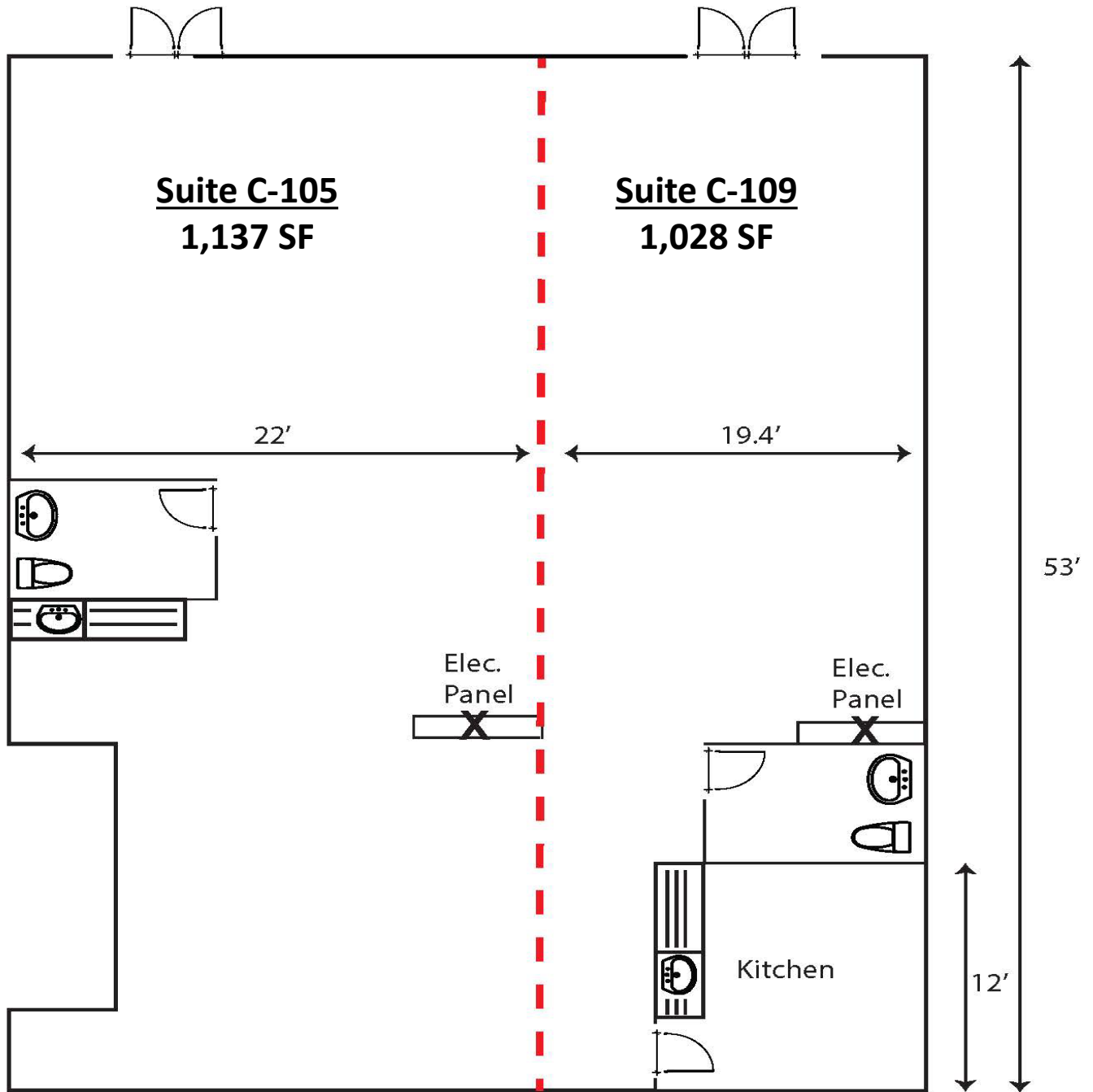
Atlanta, GA 30328

Building C- Suite 105-109

±1,137 – ±1,028 SF

**All measurements are estimates*

Both Suites Are Available Separately or Combined



The information contained herein has been received from sources considered reliable, but no liability is assumed by Richard Bowers & Co. or its Agents for errors and omissions.



Richard Bowers & Co.
260 Peachtree Street | Suite 2400
Atlanta, GA 30303
(404) 816-1600
www.richardbowers.com



For More Information contact:

Exclusive Agent:

Jeff McMullen
(770) 380-6538 - Mobile
jmcullen@richardbowers.com