

±78,000 SF

FOR SALE

Warehouse

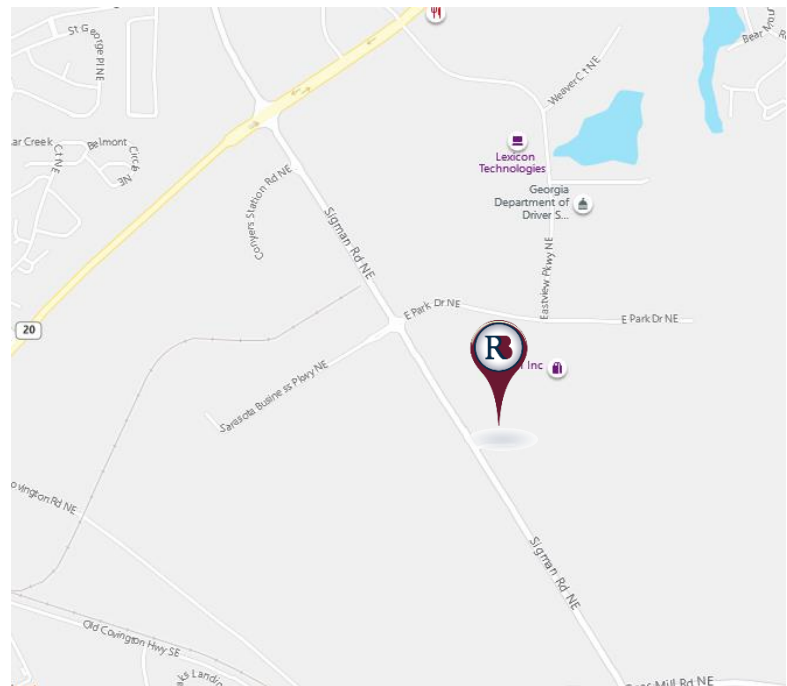
Packaging/Manufacturing Facility

2028 Transparent Drive
Conyers, GA 30013



Property Highlights

- Approximately 78,000 S.F
- Approximately 4.9 acres
- Zoned, Industrial Distribution (I.D.) District
- Year of Construction 1999. Expanded in 2007
- Approximately 2,000 AMP Power
- Skylights, T-5 lights in Warehouse
- Approximately 3,112 S.F. of Office Space plus approximately 2,500 S.F. Mezzanine
- Approximately 20' Clear Height
- 6" Concrete Floors, Column Spacing 25' x 50'
- Steel and Tilt Wall Construction
- Dock Doors – 7
- Drive in Doors – 1
- Sprinklers



Exclusive Agent

Randy Hoye

Cell: 404.295.0908

rhoye@richardbowers.com

www.richardbowers.com

260 Peachtree Street, Suite 2400, Atlanta, GA 30303 | Phone (404) 816-1600 | Fax (404) 880-0077

The information contained herein has been received from sources deemed reliable but no liability is assumed by Richard Bowers & Co. or its agents for errors or omissions.



Richard Bowers & Co.
Real Estate

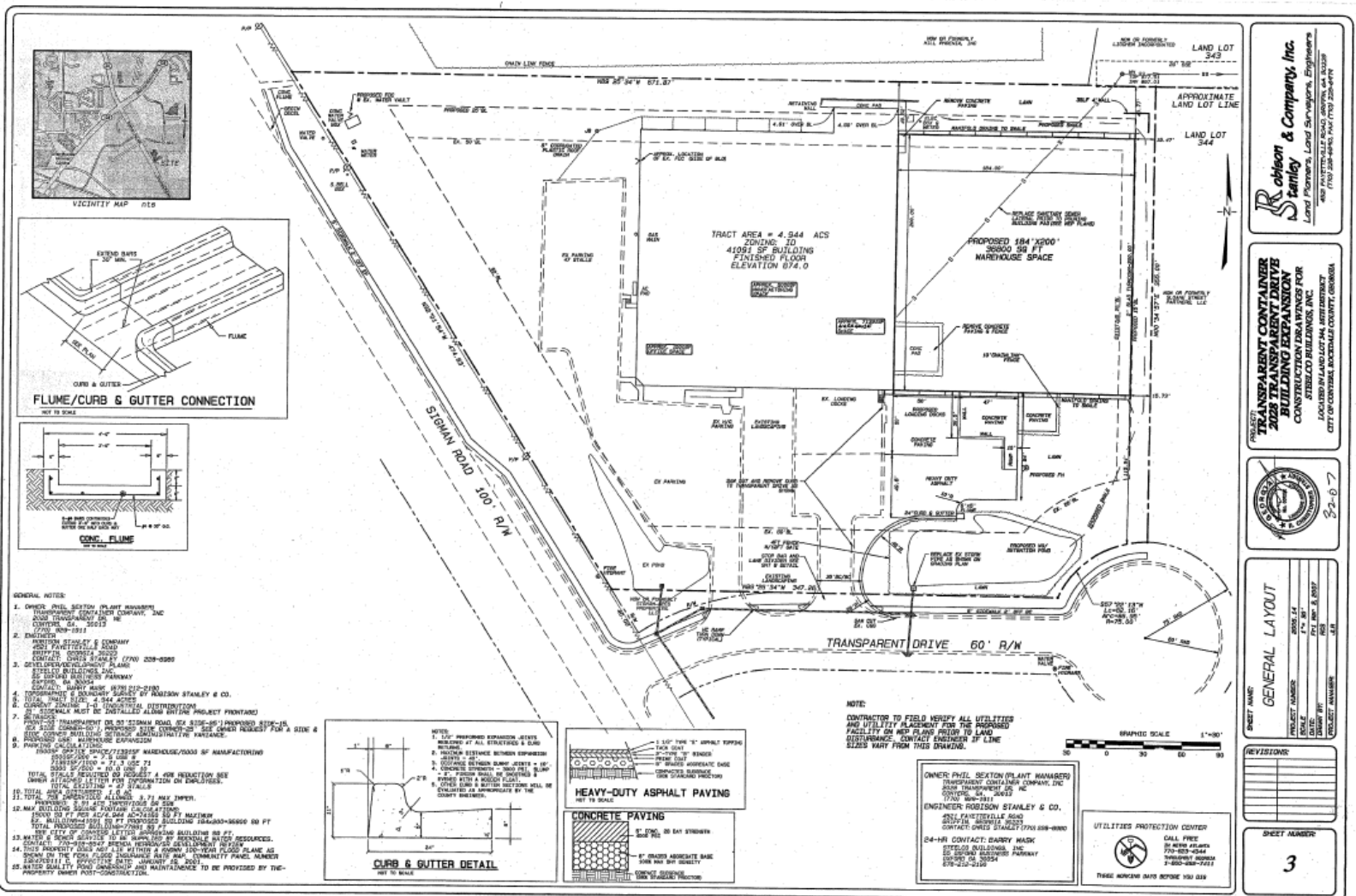
TCN
WORLDWIDE
REAL ESTATE SERVICES

±78,000 SF
FOR SALE
Warehouse

Packaging/Manufacturing Facility

2028 Transparent Drive
 Conyers, GA 30013

Site Plan



Exclusive Agent

Randy Hoyer
 Cell: 404.295.0908
 rhoyer@richardbowers.com

www.richardbowers.com

260 Peachtree Street, Suite 2400, Atlanta, GA 30303 | Phone (404) 816-1600 | Fax (404) 880-0077

The information contained herein has been received from sources deemed reliable but no liability is assumed by Richard Bowers & Co. or its agents for errors or omissions.

Richard Bowers & Co.
 Real Estate

TCN
 WORLDWIDE
 REAL ESTATE SERVICES

Robison & Company, Inc.
 Land Planners, Land Surveyors, Engineers
 1100 Peachtree Street, N.E.
 Atlanta, Georgia 30309
 (404) 525-8800

ANSI A92.1 COMPLIANT
2028 TRANSPARENT DRIVE
BUILDING EXPANSION
CONSTRUCTION DRAWINGS FOR
STEELED BUILDINGS, INC.
 LOCATED PLAND LOT 344, BETHLEHEM
 CITY OF CONYERS, BOYD COUNTY, GEORGIA



REVISION	DATE	BY

SHEET NUMBER
3