

2052 Moreland Avenue

(At Hillcrest Drive)

Atlanta, GA 30316

Dekalb County

INDUSTRIAL/
RETAIL

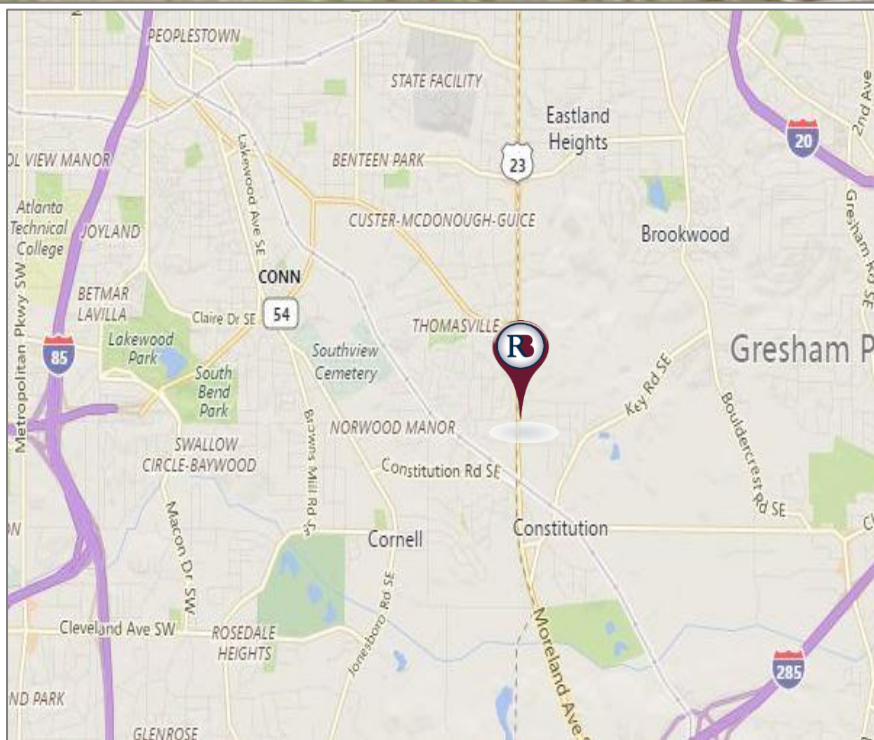
BUILDING FOR SALE

6,085 SF



Property Highlights

- 5,000 SF ATTACHED WAREHOUSE
- 1,085 SF ATTACHED BUILDING
- 6,085 SF TOTAL ON 0.3 ACRES
- ZONED C-2
- CEILING CLEAR HEIGHT 12'
- 20 SKY LIGHTS
- GAS SPACE HEAT
- 3 DRIVE-IN DOORS 12' x 12'
- 6" FLOORS
- POWER 110/220 VAC / 200 AMP / 3 PHASE
- COMPRESSED AIR SYSTEM IN-PLACE
- 1 RESTROOM ON SEPTIC TANK
- TRAFFIC COUNT: 25,680 CARS / DAY
- SECURITY SYSTEM
- ARC WELDER CIRCUIT
- PREMISES SIGN



Exclusive Agent:

Vernon Wright

404.816.1600 Ext. 137

vwright@richardbowers.com

www.richardbowers.com



Richard Bowers & Co.
Real Estate



260 Peachtree Street, Suite 2400, Atlanta, GA 30303 | Phone (404) 816-1600 | Fax (404) 880-0077

The information contained herein has been received from sources deemed reliable but no liability is assumed by Richard Bowers & Co. or its agents for errors or omissions.



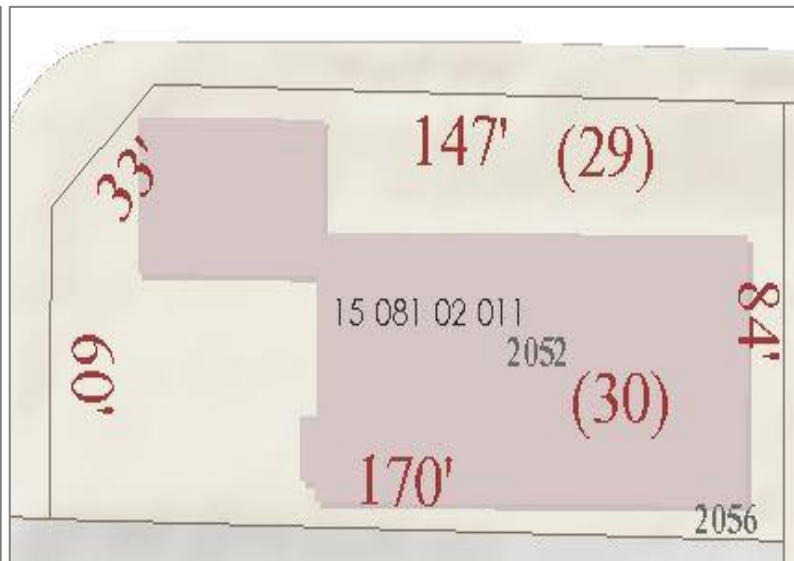
2052 Moreland Avenue

(At Hillcrest Drive)
(Atlanta, GA 30316
DeKalb County

Rear View



Dimensions



Parcel Map

Exclusive Agent:

Vernon Wright

404.816.1600 Ext. 137

vwright@richardbowers.com www.richardbowers.com

260 Peachtree Street, Suite 2400, Atlanta, GA 30303 | Phone (404) 816-1600 | Fax (404) 880-0077



Richard Bowers & Co.
Real Estate

