

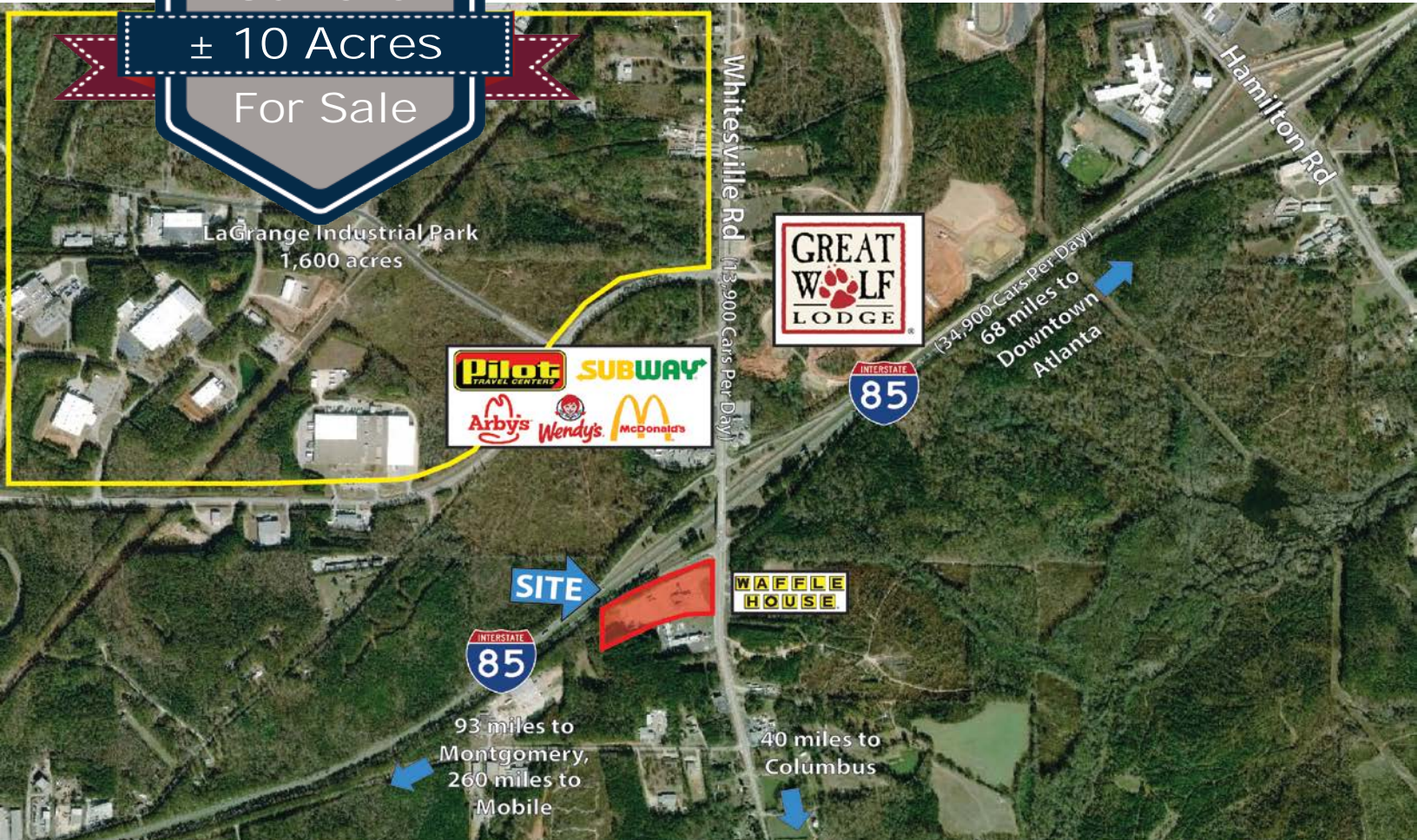
2560 Whitesville Road

LaGrange, GA 30240

TRUCK STOP

± 10 Acres

For Sale



Property Highlights

- Building Size: ± 12,566 SF
- Acreage: ± 10
- Utilities: All Utilities Available
- Frontage: 1217' on I-85
600' on Whitesville Rd.
- Year Built: 1969
- Troup County, GA
- Existing Use: Full-Service Truck Stop
- Zoned: G-C (General Commercial)

Exclusive Agent:

Willie Ellington

404.816.1600 Ext. 148

wellington@richardbowers.com



www.richardbowers.com

260 Peachtree Street, Suite 2400, Atlanta, GA 30303 | Phone (404) 816-1600 | Fax (404) 880-0077

The information contained herein has been received from sources deemed reliable but no liability is assumed by Richard Bowers & Co. or its agents for errors or omissions.

