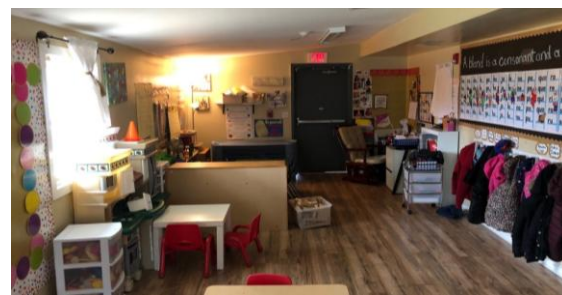


2561 Jerome Road
College Park, GA 30349

.71 ACRES

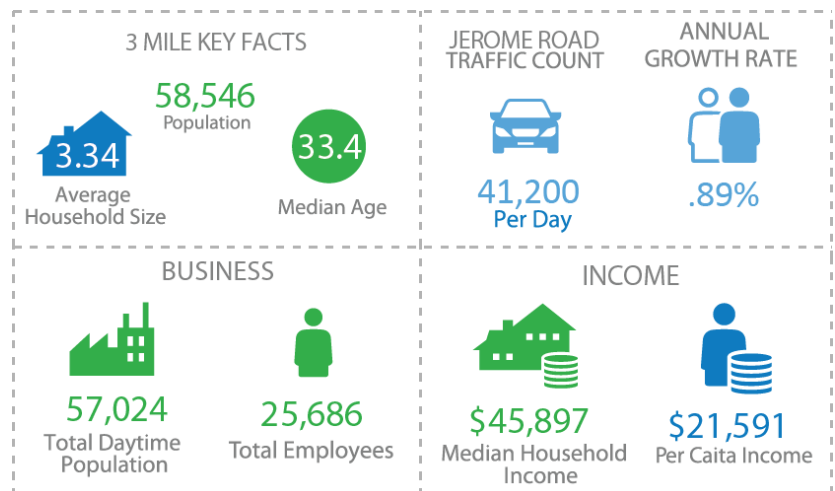
FOR SALE

2,447 SF



Property Highlights

- Sales Price: \$370,000
- 2,447 SF Child Care Facility (with outdoor room to grow)
- C1 Zoning (Residential/Commercial Mixed)
- Large room for additional play area
- Quick Access to Old National Highway
- Easy Turn around for Drop Offs
- Located directly behind South Fulton Police Station



Exclusive Agents

Jeff McMullen
770-380-6538
jmcmullen@richardbowers.com



www.richardbowers.com

260 Peachtree Street, Suite 2400, Atlanta, GA 30303 | Phone (404) 816-1600 | Fax (404) 880-0077

The information contained herein has been received from sources deemed reliable but no liability is assumed by Richard Bowers & Co. or its agents for errors or omissions.