

2940 Memorial Drive SE Atlanta, GA 30317

± 0.3 Land
Assemblage
For Sale



Property Highlights

- Asking Price:** \$150,000
\$500,000/acre
\$11.47per SF
- Traffic Count:** 2,000 cars per day on Memorial Dr.
- Frontage:** ±50 feet on Memorial Dr.
- Zoning:** C-1(Commercial Dekalb County)
- Improvements:** One abandoned Single Family Home
- Topography:** Flat and wooded
- Utilities:** All available to site
- Subdivision:** East Lake Heights



Exclusive Agents

Bill Johnson, CCIM
Senior Vice President
404.583.6533 Cell 404.816.1600 Office
bjohnson@richardbowers.com



www.richardbowers.com

260 Peachtree Street, Suite 2400, Atlanta, GA 30303 | Phone (404) 816-1600 | Fax (404) 880-0077

The information contained herein has been received from sources deemed reliable but no liability is assumed by Richard Bowers & Co. or its agents for errors or omissions.

2940 Memorial Drive SE

Atlanta, GA 30317

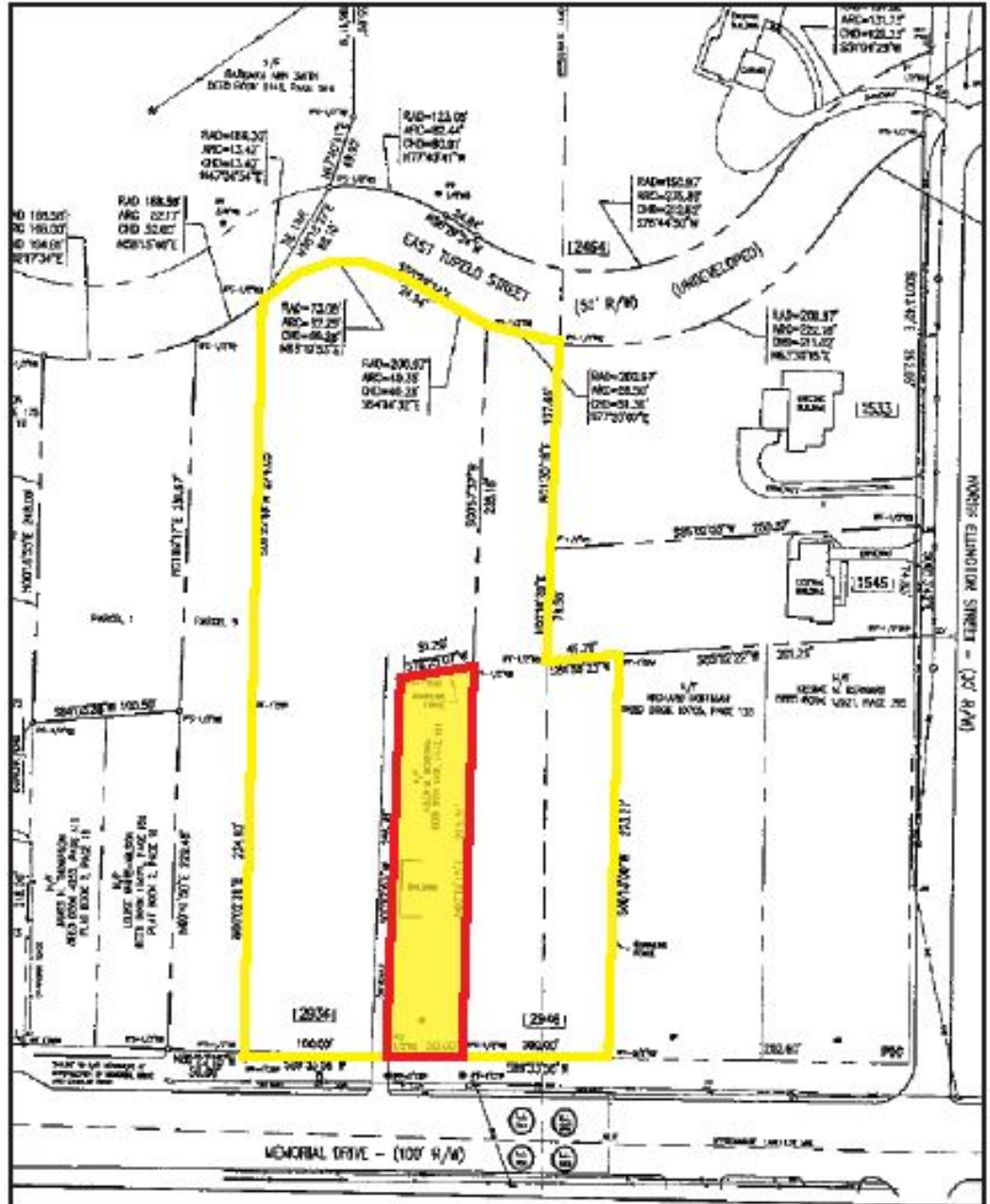


Location:

Approximately 700 feet east of the intersection of Candler Rd. and Memorial Dr. SE

Site is surrounded by five additional sites available for assemblage (outlined in yellow)

Approximately $\frac{3}{4}$ mile from the prestigious East Lake Country Club



Exclusive Agents

Bill Johnson, CCIM
Senior Vice President
404.583.6533 Cell 404.816.1600 Office
bjohnson@richardbowers.com



www.richardbowers.com

260 Peachtree Street, Suite 2400, Atlanta, GA 30303 | Phone (404) 816-1600 | Fax (404) 880-0077

The information contained herein has been received from sources deemed reliable but no liability is assumed by Richard Bowers & Co. or its agents for errors or omissions.