

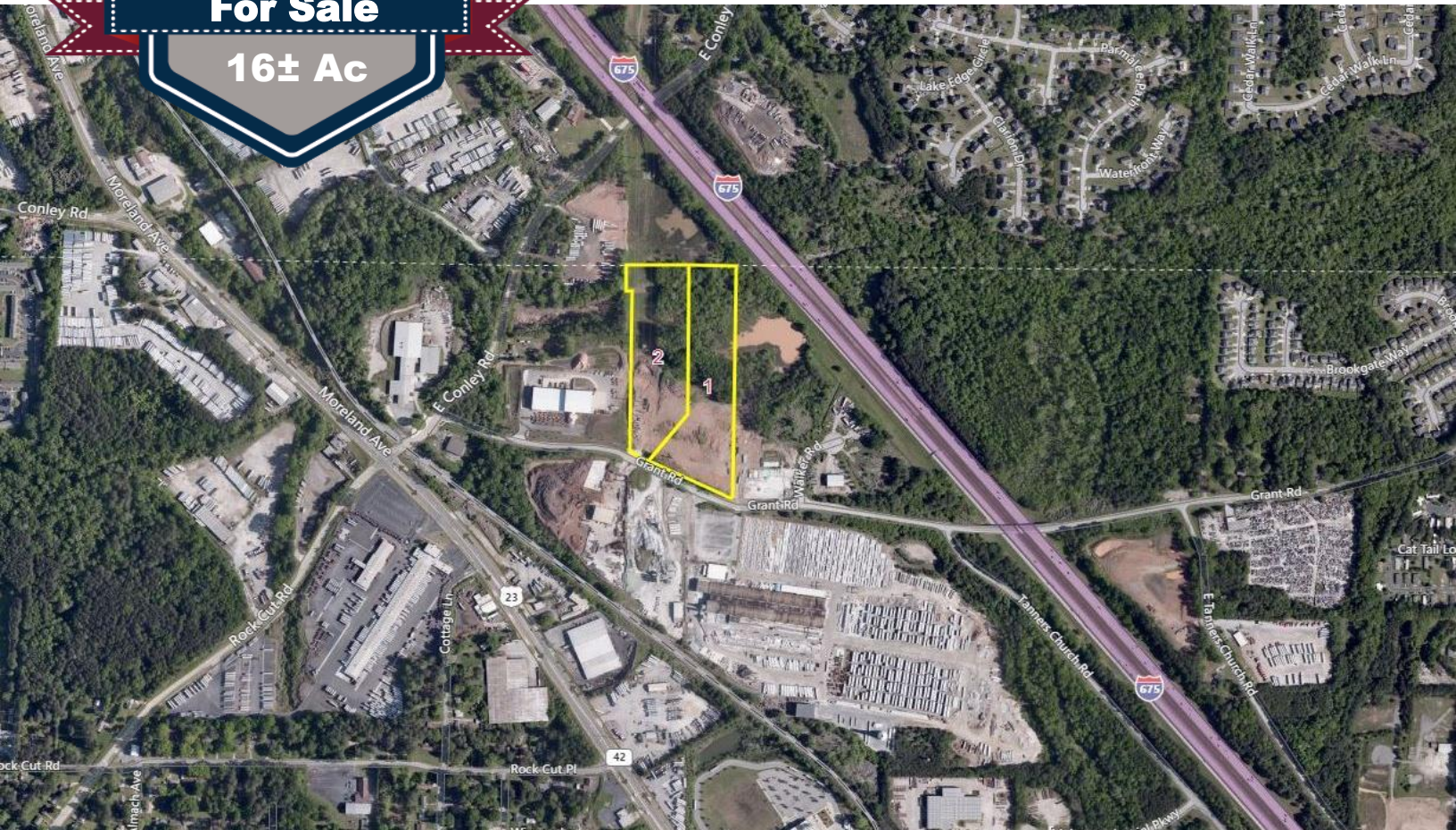
# 3310 & 3322 Grant Road

Conley, GA 30288

Land

For Sale

16± Ac



## Property Highlights

- Land for Sale
- 16± Acres
- Zoning: HI- Heavy Industrial
- Frontage: 642.7 feet along Grant Road
- Excellent Access to I-675 & Moreland Avenue
- Located in Clayton County



## Exclusive Agents:

**Richard Boatright**

404.816.1600 Ext. 135

[rboatright@richardbowers.com](mailto:rboatright@richardbowers.com)

**Michael Cheney, CCIM**

404-816-1600, Ext 134

[mcheney@richardbowers.com](mailto:mcheney@richardbowers.com)

[www.richardbowers.com](http://www.richardbowers.com)



Richard Bowers & Co.  
Real Estate



260 Peachtree Street, Suite 2400, Atlanta, GA 30303 | Phone (404) 816-1600 | Fax (404) 880-0077

The information contained herein has been received from sources deemed reliable but no liability is assumed by Richard Bowers & Co. or its agents for errors or omissions.